

A4346

Leader in Biomolecular Solutions for Life Science



Calcineurin A Rabbit mAb

Catalog No.: A4346 **Recombinant** **3 Publications**

Basic Information

Observed MW

59kDa

Calculated MW

59kDa

Category

SMab Recombinant Monoclonal Antibody

Applications

WB,ELISA

Cross-Reactivity

Human,Mouse,Rat

CloneNo number

ARC0970

Background

Enables several functions, including ATPase binding activity; calmodulin binding activity; and calmodulin-dependent protein phosphatase activity. Involved in several processes, including calcineurin-NFAT signaling cascade; peptidyl-serine dephosphorylation; and response to calcium ion. Located in several cellular components, including cytosol; dendritic spine; and nucleoplasm. Part of calcineurin complex. Colocalizes with cytoplasmic side of plasma membrane. Implicated in developmental and epileptic encephalopathy 91. Biomarker of focal segmental glomerulosclerosis and schizophrenia.

Recommended Dilutions

WB 1:500 - 1:2000

Immunogen Information

Gene ID

5530

Swiss Prot

Q08209

Immunogen

A synthetic peptide corresponding to a sequence within amino acids 422-521 of human Calcineurin A (Q08209).

Synonyms

CALN; CCN1; CNA1; CALNA; DEE91; IECEE; PPP2B; ACCIID; CALNA1; IECEE1; Calcineurin A

Contact



www.abclonal.com

Product Information

Source

Rabbit

Isotype

IgG

Purification

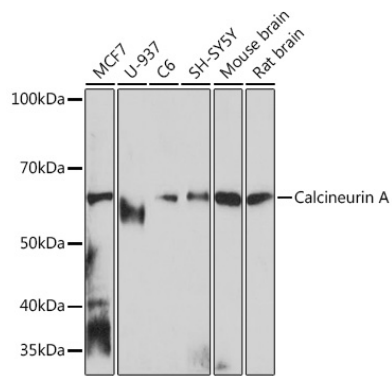
Affinity purification

Storage

Store at -20°C. Avoid freeze / thaw cycles.

Buffer: PBS with 0.02% sodium azide,0.05% BSA,50% glycerol,pH7.3.

Validation Data



Western blot analysis of extracts of various cell lines, using Calcineurin A Rabbit mAb (A4346) at 1:1000 dilution.

Secondary antibody: HRP Goat Anti-Rabbit IgG (H+L) (AS014) at 1:10000 dilution.

Lysates/proteins: 25µg per lane.

Blocking buffer: 3% nonfat dry milk in TBST.

Detection: ECL Basic Kit (RM00020).

Exposure time: 10s.