

A4338

Leader in Biomolecular Solutions for Life Science



## eIF4A3 Rabbit pAb

Catalog No.: A4338

### Basic Information

#### Observed MW

47kDa

#### Calculated MW

47kDa

#### Category

Mouse Monoclonal Antibody

#### Applications

WB,ELISA

#### Cross-Reactivity

Human,Mouse,Rat

#### Conjugate

Unconjugated

### Recommended Dilutions

WB 1:1000 - 1:3000

### Background

This gene encodes a member of the DEAD box protein family. DEAD box proteins, characterized by the conserved motif Asp-Glu-Ala-Asp (DEAD), are putative RNA helicases. They are implicated in a number of cellular processes involving alteration of RNA secondary structure, such as translation initiation, nuclear and mitochondrial splicing, and ribosome and spliceosome assembly. Based on their distribution patterns, some members of this family are believed to be involved in embryogenesis, spermatogenesis, and cellular growth and division. The protein encoded by this gene is a nuclear matrix protein. Its amino acid sequence is highly similar to the amino acid sequences of the translation initiation factors eIF4A1 and eIF4A11, two other members of the DEAD box protein family.

### Immunogen Information

#### Gene ID

9775

#### Swiss Prot

P38919

#### Immunogen

Recombinant fusion protein containing a sequence corresponding to amino acids 1-210 of human eIF4A3 (NP\_055555.1).

#### Synonyms

Fal1; RCPS; DDX48; MUK34; NUK34; NMP265; eIF4A11; eIF4A-III; eIF-4A-III; eIF4A3

### Contact



[www.abclonal.com](http://www.abclonal.com)

### Product Information

#### Source

Rabbit

#### Isotype

IgG

#### Purification

Affinity purification

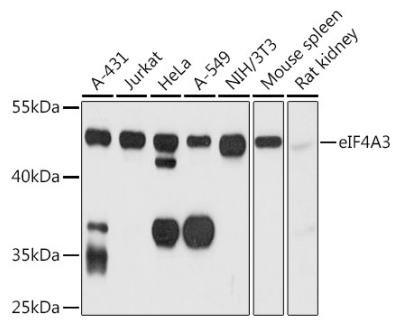
#### Storage

Store at -20°C. Avoid freeze / thaw cycles.

Buffer: PBS with 0.01% thimerosal,50% glycerol,pH7.3.

## Validation Data

---



Western blot analysis of various lysates using eIF4A3 Rabbit pAb (A4338) at 1:1000 dilution.  
Secondary antibody: HRP Goat Anti-Rabbit IgG (H+L) (AS014) at 1:10000 dilution.  
Lysates/proteins: 25µg per lane.  
Blocking buffer: 3% nonfat dry milk in TBST.  
Detection: ECL Basic Kit (RM00020).  
Exposure time: 10s.