

A4337

Leader in Biomolecular Solutions for Life Science



RAPGEF5 Rabbit pAb

Catalog No.: A4337

Basic Information

Observed MW

49kDa

Calculated MW

68kDa

Category

Mouse Monoclonal Antibody

Applications

WB

Cross-Reactivity

Human

Background

Members of the RAS (see HRAS; MIM 190020) subfamily of GTPases function in signal transduction as GTP/GDP-regulated switches that cycle between inactive GDP- and active GTP-bound states. Guanine nucleotide exchange factors (GEFs), such as RAPGEF5, serve as RAS activators by promoting acquisition of GTP to maintain the active GTP-bound state and are the key link between cell surface receptors and RAS activation (Rebhun et al., 2000 [PubMed 10934204]).

Recommended Dilutions

WB 1:500 - 1:1000

Immunogen Information

Gene ID

9771

Swiss Prot

Q92565

Immunogen

A synthetic Peptide of human RAPGEF5

Synonyms

GFR; MRGEF; REPAC; MR-GEF; RAPGEF5

Contact



www.abclonal.com

Product Information

Source

Rabbit

Isotype

IgG

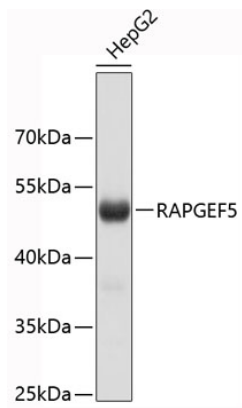
Purification

Affinity purification

Storage

Store at 4°C. Avoid freeze / thaw cycles.
Buffer: PBS with 0.02% sodium azide, pH7.3.

Validation Data



Western blot analysis of extracts of HepG2 cells, using RAPGEF5 antibody (A4337).
Secondary antibody: HRP Goat Anti-Rabbit IgG (H+L) (AS014) at 1:10000 dilution.
Lysates/proteins: 25µg per lane.
Blocking buffer: 3% nonfat dry milk in TBST.