

MTRF1 Rabbit pAb

Catalog No.: A4327

Basic Information

Observed MW

43kDa

Calculated MW

52kDa

Category

Primary antibody

Applications

WB

Cross-Reactivity

Human

Background

The protein encoded by this gene was determined by in silico methods to be a mitochondrial protein with similarity to the peptide chain release factors (RFs) discovered in bacteria and yeast. The peptide chain release factors direct the termination of translation in response to the peptide chain termination codons. Initially thought to have a role in the termination of mitochondria protein synthesis, a recent publication found no mitochondrial translation release functionality. Multiple alternatively spliced transcript variants have been suggested by mRNA and EST data; however, their full-length natures are not clear.

Recommended Dilutions

WB 1:500 - 1:1000

Immunogen Information

Gene ID

9617

Swiss Prot

O75570

Immunogen

A synthetic Peptide of human MTRF1

Synonyms

RF1; MRF1; MTTRF1; MTRF1

Contact

 | www.abclonal.com

Product Information

Source

Rabbit

Isotype

IgG

Purification

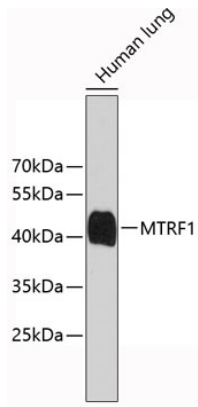
Affinity purification

Storage

Store at 4°C. Avoid freeze / thaw cycles.

Buffer: PBS with 0.02% sodium azide, pH7.3.

Validation Data



Western blot analysis of extracts of human lung, using MTRF1 antibody (A4327).
Secondary antibody: HRP Goat Anti-Rabbit IgG (H+L) (AS014) at 1:10000 dilution.
Lysates/proteins: 25 μ g per lane.
Blocking buffer: 3% nonfat dry milk in TBST.