

GOSR2 Rabbit pAb

Catalog No.: A4321

Basic Information

Observed MW

24kDa

Calculated MW

25kDa

Category

Primary antibody

Applications

ELISA, WB

Cross-Reactivity

Human

Background

This gene encodes a trafficking membrane protein which transports proteins among the medial- and trans-Golgi compartments. Due to its chromosomal location and trafficking function, this gene may be involved in familial essential hypertension.

Recommended Dilutions

WB 1:500 - 1:2000

Immunogen Information

Gene ID

9570

Swiss Prot

O14653

Immunogen

Recombinant fusion protein containing a sequence corresponding to amino acids 1-190 of human GOSR2 (NP_004278.2).

Synonyms

Bos1; EPM6; GS27; MYOS; GOSR2

Contact

 | www.abclonal.com

Product Information

Source

Rabbit

Isotype

IgG

Purification

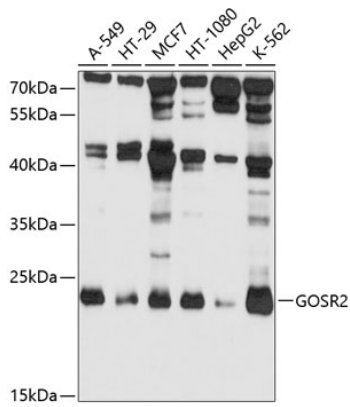
Affinity purification

Storage

Store at -20°C. Avoid freeze / thaw cycles.

Buffer: PBS with 0.02% sodium azide, 50% glycerol, pH7.3.

Validation Data



Western blot analysis of extracts of various cell lines, using GOSR2 antibody (A4321) at 1:1000 dilution.

Secondary antibody: HRP Goat Anti-Rabbit IgG (H+L) (AS014) at 1:10000 dilution.

Lysates/proteins: 25µg per lane.

Blocking buffer: 3% nonfat dry milk in TBST.

Detection: ECL Basic Kit (RM00020).

Exposure time: 10s.