

A4316

Leader in Biomolecular Solutions for Life Science



# GOSR1 Rabbit pAb

Catalog No.: A4316 **2 Publications**

## Basic Information

### Observed MW

29kDa

### Calculated MW

29kDa

### Category

Mouse Monoclonal Antibody

### Applications

WB,ELISA

### Cross-Reactivity

Human,Mouse

## Background

This gene encodes a trafficking membrane protein which transports proteins among the endoplasmic reticulum and the Golgi and between Golgi compartments. This protein is considered an essential component of the Golgi SNAP receptor (SNARE) complex. Alternatively spliced transcript variants encoding distinct isoforms have been found for this gene.

## Recommended Dilutions

WB 1:500 - 1:2000

## Immunogen Information

### Gene ID

9527

### Swiss Prot

O95249

### Immunogen

Recombinant fusion protein containing a sequence corresponding to amino acids 1-115 of human GOSR1 (NP\_004862.1).

### Synonyms

P28; GS28; GOS28; GOLIM2; GOS-28; GOS28/P28; GOSR1

## Contact



[www.abclonal.com](http://www.abclonal.com)

## Product Information

### Source

Rabbit

### Isotype

IgG

### Purification

Affinity purification

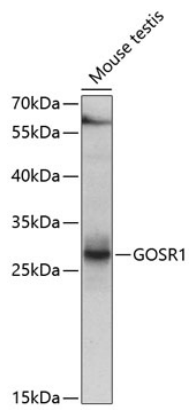
### Storage

Store at -20°C. Avoid freeze / thaw cycles.

Buffer: PBS with 0.02% sodium azide,50% glycerol,pH7.3.

## Validation Data

---



Western blot analysis of extracts of mouse testis, using GOSR1 antibody (A4316) at 1:1000 dilution. Secondary antibody: HRP Goat Anti-Rabbit IgG (H+L) (AS014) at 1:10000 dilution. Lysates/proteins: 25µg per lane. Blocking buffer: 3% nonfat dry milk in TBST. Detection: ECL Enhanced Kit (RM00021). Exposure time: 15s.