

# FXR2 Rabbit pAb

Catalog No.: A4313

## Basic Information

### Observed MW

104kDa

### Calculated MW

74kDa

### Category

Primary antibody

### Applications

WB,IF/ICC

### Cross-Reactivity

Human, Mouse

## Background

The protein encoded by this gene is a RNA binding protein containing two KH domains and one RCG box, which is similar to FMRP and FXR1. It associates with polyribosomes, predominantly with 60S large ribosomal subunits. This encoded protein may self-associate or interact with FMRP and FXR1. It may have a role in the development of fragile X mental retardation syndrome.

## Recommended Dilutions

<b>WB</b>	1:500 - 1:2000
<b>IF/ICC</b>	1:50 - 1:200

## Immunogen Information

<b>Gene ID</b>	<b>Swiss Prot</b>
9513	P51116

### Immunogen

A synthetic peptide corresponding to a sequence within amino acids 550-650 of human FXR2 (NP\_004851.2).

### Synonyms

FXR2;FMR1L2;FXR2P

## Contact

 | [www.abclonal.com](http://www.abclonal.com)

## Product Information

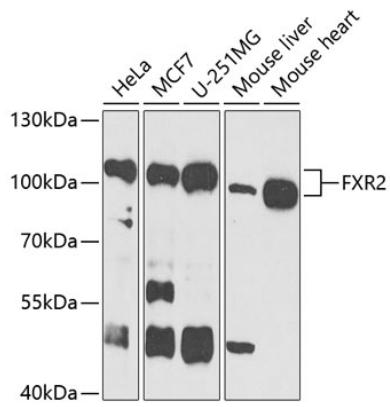
<b>Source</b>	<b>Isotype</b>	<b>Purification</b>
Rabbit	IgG	Affinity purification

### Storage

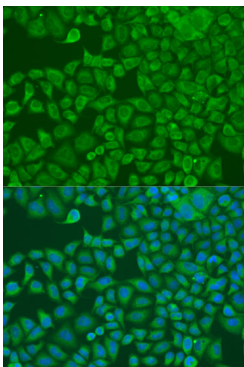
Store at -20°C. Avoid freeze / thaw cycles.  
Buffer: PBS with 0.02% sodium azide,50% glycerol,pH7.3.

## Validation Data

---



Western blot analysis of extracts of various cell lines, using FXR2 antibody (A4313) at 1:1000 dilution. Secondary antibody: HRP Goat Anti-Rabbit IgG (H+L) (AS014) at 1:10000 dilution. Lysates/proteins: 25ug per lane. Blocking buffer: 3% nonfat dry milk in TBST. Detection: ECL Basic Kit (RM00020). Exposure time: 90s.



Immunofluorescence analysis of U2OS cells using FXR2 antibody (A4313) at dilution of 1:100. Blue: DAPI for nuclear staining.