

# RPH3AL Rabbit pAb

Catalog No.: A4311

## Basic Information

### Observed MW

45kDa

### Calculated MW

34kDa

### Category

Primary antibody

### Applications

ELISA, WB, IF/ICC

### Cross-Reactivity

Human, Mouse

## Background

The protein encoded by this gene plays a direct regulatory role in calcium-ion-dependent exocytosis in both endocrine and exocrine cells and plays a key role in insulin secretion by pancreatic cells. This gene is likely a tumor suppressor. Alternative splicing results in multiple transcript variants encoding distinct isoforms.

## Recommended Dilutions

|               |                |
|---------------|----------------|
| <b>WB</b>     | 1:500 - 1:2000 |
| <b>IF/ICC</b> | 1:50 - 1:200   |

## Immunogen Information

|                |                   |
|----------------|-------------------|
| <b>Gene ID</b> | <b>Swiss Prot</b> |
| 9501           | Q9UNE2            |

### Immunogen

Recombinant fusion protein containing a sequence corresponding to amino acids 161-315 of human RPH3AL (NP\_008918.1).

### Synonyms

NOC2; RPH3AL

## Contact

 | [www.abclonal.com](http://www.abclonal.com)

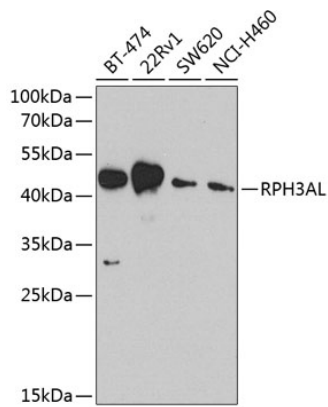
## Product Information

|               |                |                       |
|---------------|----------------|-----------------------|
| <b>Source</b> | <b>Isotype</b> | <b>Purification</b>   |
| Rabbit        | IgG            | Affinity purification |

### Storage

Store at -20°C. Avoid freeze / thaw cycles.  
Buffer: PBS with 0.02% sodium azide, 50% glycerol, pH7.3.

## Validation Data



Western blot analysis of extracts of various cell lines, using RPH3AL antibody (A4311) at 1:1000 dilution.

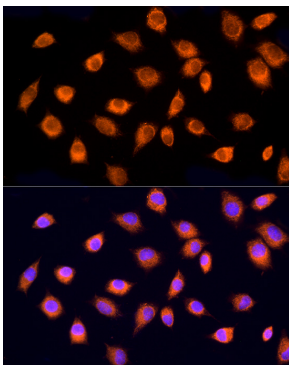
Secondary antibody: HRP Goat Anti-Rabbit IgG (H+L) (AS014) at 1:10000 dilution.

Lysates/proteins: 25µg per lane.

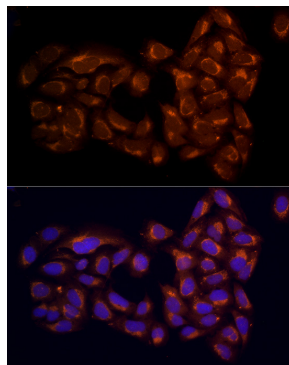
Blocking buffer: 3% nonfat dry milk in TBST.

Detection: ECL Basic Kit (RM00020).

Exposure time: 90s.



Immunofluorescence analysis of L929 cells using RPH3AL Rabbit pAb (A4311) at dilution of 100 (40x lens). Blue: DAPI for nuclear staining.



Immunofluorescence analysis of U2OS cells using RPH3AL Rabbit pAb (A4311) at dilution of 100 (40x lens). Blue: DAPI for nuclear staining.