

EIF4E2 Rabbit pAb

Catalog No.: A4305 **2 Publications**

Basic Information

Observed MW

27kDa/28kDa

Calculated MW

28kDa

Category

Primary antibody

Applications

ELISA, WB, IHC-P, IF/ICC

Cross-Reactivity

Human, Mouse, Rat

Background

Enables ubiquitin protein ligase binding activity. Involved in positive regulation of miRNA mediated inhibition of translation. Acts upstream of or within negative regulation of translation. Located in P-body. Part of mRNA cap binding activity complex.

Recommended Dilutions

WB	1:500 - 1:1000
IHC-P	1:50 - 1:200
IF/ICC	1:50 - 1:200

Immunogen Information

Gene ID	Swiss Prot
9470	O60573

Immunogen

Recombinant fusion protein containing a sequence corresponding to amino acids 1-240 of human EIF4E2 (NP_004837.1).

Synonyms

4EHP; IF4e; 4E-LP; h4EHP; EIF4EL3; EIF4E2

Contact

 | www.abclonal.com

Product Information

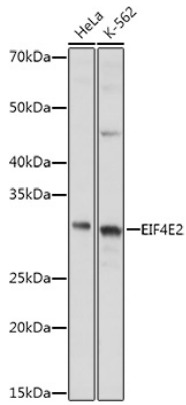
Source	Isotype	Purification
Rabbit	IgG	Affinity purification

Storage

Store at -20°C. Avoid freeze / thaw cycles.

Buffer: PBS with 0.01% thimerosal, 50% glycerol, pH7.3.

Validation Data



Western blot analysis of extracts of various cell lines, using EIF4E2 antibody (A4305) at 1:1000 dilution.

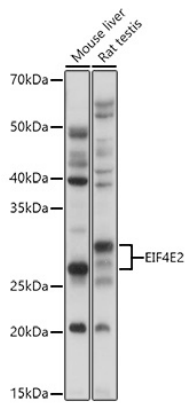
Secondary antibody: HRP Goat Anti-Rabbit IgG (H+L) (AS014) at 1:10000 dilution.

Lysates/proteins: 25µg per lane.

Blocking buffer: 3% nonfat dry milk in TBST.

Detection: ECL Basic Kit (RM00020).

Exposure time: 2s.



Western blot analysis of extracts of various cell lines, using EIF4E2 antibody (A4305) at 1:1000 dilution.

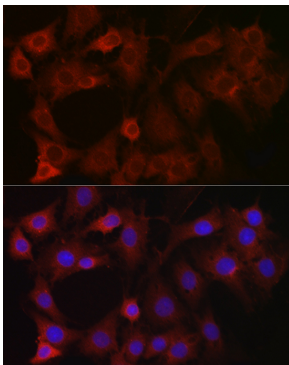
Secondary antibody: HRP Goat Anti-Rabbit IgG (H+L) (AS014) at 1:10000 dilution.

Lysates/proteins: 25µg per lane.

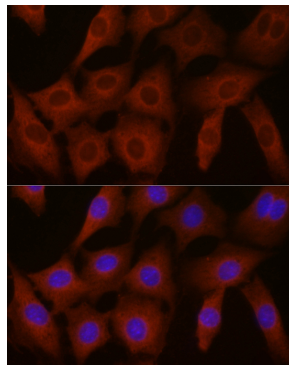
Blocking buffer: 3% nonfat dry milk in TBST.

Detection: ECL Basic Kit (RM00020).

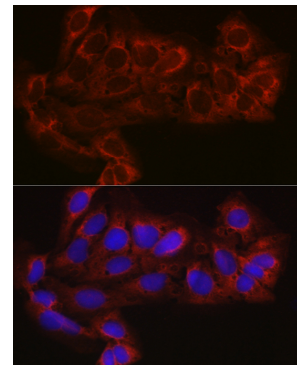
Exposure time: 5s.



Immunofluorescence analysis of C6 cells using EIF4E2 Rabbit pAb (A4305) at dilution of 1:100 (40x lens). Blue: DAPI for nuclear staining.



Immunofluorescence analysis of NIH-3T3 cells using EIF4E2 Rabbit pAb (A4305) at dilution of 1:100 (40x lens). Blue: DAPI for nuclear staining.



Immunofluorescence analysis of U-2 OS cells using EIF4E2 Rabbit pAb (A4305) at dilution of 1:100 (40x lens). Blue: DAPI for nuclear staining.