

A4293

Leader in Biomolecular Solutions for Life Science



LONP1 Rabbit pAb

Catalog No.: A4293 **5 Publications**

Basic Information

Observed MW

106kDa

Calculated MW

106kDa

Category

Polyclonal Antibody

Applications

WB,IHC-P,IF/ICC,IP,ELISA

Cross-Reactivity

Human,Mouse,Rat

Background

This gene encodes a mitochondrial matrix protein that belongs to the Lon family of ATP-dependent proteases. This protein mediates the selective degradation of misfolded, unassembled or oxidatively damaged polypeptides in the mitochondrial matrix. It may also have a chaperone function in the assembly of inner membrane protein complexes, and participate in the regulation of mitochondrial gene expression and maintenance of the integrity of the mitochondrial genome. Decreased expression of this gene has been noted in a patient with hereditary spastic paraplegia (PMID:18378094). Alternatively spliced transcript variants have been found for this gene.

Recommended Dilutions

WB	1:500 - 1:2000
IHC-P	1:50 - 1:200
IF/ICC	1:50 - 1:200
IP	0.5µg-4µg antibody for 200µg-400µg extracts of whole cells

Immunogen Information

Gene ID

9361

Swiss Prot

P36776

Immunogen

Recombinant fusion protein containing a sequence corresponding to amino acids 120-400 of human LONP1 (NP_004784.2).

Synonyms

LON; LONP; PIM1; hLON; LonHS; CODASS; PRSS15; LONP1

Contact



www.abclonal.com

Product Information

Source

Rabbit

Isotype

IgG

Purification

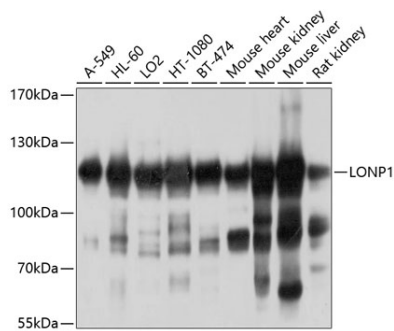
Affinity purification

Storage

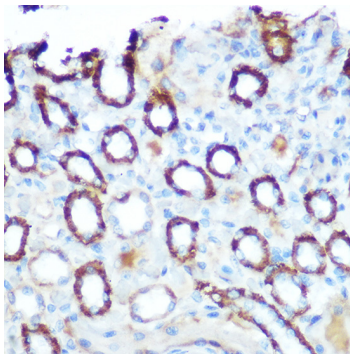
Store at -20°C. Avoid freeze / thaw cycles.

Buffer: PBS with 0.02% sodium azide,50% glycerol,pH7.3.

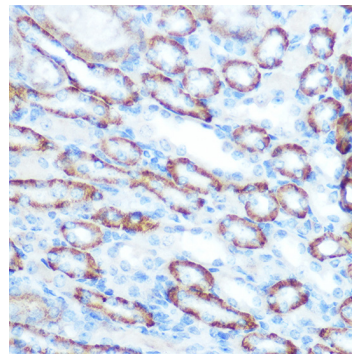
Validation Data



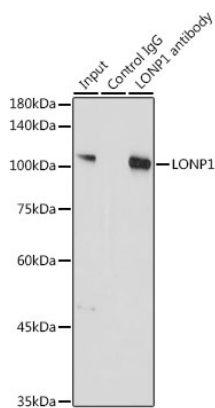
Western blot analysis of various lysates using LONP1 Rabbit pAb (A4293) at 1:1000 dilution.
Secondary antibody: HRP Goat Anti-Rabbit IgG (H+L) (AS014) at 1:10000 dilution.
Lysates/proteins: 25µg per lane.
Blocking buffer: 3% nonfat dry milk in TBST.
Detection: ECL Basic Kit (RM00020).
Exposure time: 5s.



Immunohistochemistry analysis of LONP1 in paraffin-embedded rat kidney using LONP1 Rabbit pAb (A4293) at dilution of 1:100 (40x lens). Perform microwave antigen retrieval with 10 mM Tris/EDTA buffer pH 9.0 before commencing with IHC staining protocol.



Immunohistochemistry analysis of LONP1 in paraffin-embedded mouse kidney using LONP1 Rabbit pAb (A4293) at dilution of 1:100 (40x lens). Perform microwave antigen retrieval with 10 mM Tris/EDTA buffer pH 9.0 before commencing with IHC staining protocol.



Immunoprecipitation analysis of 300 µg extracts of A-549 cells using 3 µg LONP1 antibody (A4293).
Western blot was performed from the immunoprecipitate using LONP1 (A4293) at a dilution of 1:1000.