

A4240

Leader in Biomolecular Solutions for Life Science



# EIF3G Rabbit pAb

Catalog No.: A4240

## Basic Information

---

### Observed MW

42kDa

### Calculated MW

36kDa

### Category

Mouse Monoclonal Antibody

### Applications

WB,IF/ICC,ELISA

### Cross-Reactivity

Human,Mouse,Rat

## Background

---

This gene encodes a core subunit of the eukaryotic translation initiation factor 3 (eIF3) complex, which is required for initiation of protein translation. An N-terminal caspase cleavage product of the encoded protein may stimulate degradation of DNA. A mutation in this gene is associated with narcolepsy.

## Recommended Dilutions

---

WB 1:200 - 1:2000

IF/ICC 1:50 - 1:200

## Immunogen Information

---

### Gene ID

8666

### Swiss Prot

O75821

### Immunogen

Recombinant fusion protein containing a sequence corresponding to amino acids 1-320 of human EIF3G (NP\_003746.2).

### Synonyms

EIF3S4; EIF3-P42; eIF3-p44; eIF3-delta; EIF3G

## Contact

---



[www.abclonal.com](http://www.abclonal.com)

## Product Information

---

### Source

Rabbit

### Isotype

IgG

### Purification

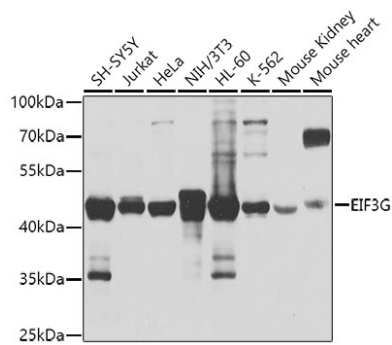
Affinity purification

### Storage

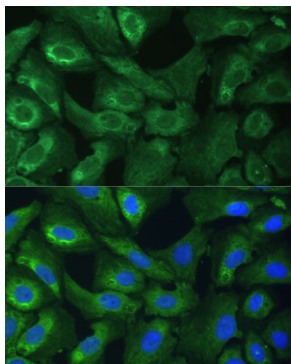
Store at -20°C. Avoid freeze / thaw cycles.

Buffer: PBS with 0.02% sodium azide,50% glycerol,pH7.3.

## Validation Data



Western blot analysis of extracts of various cell lines, using EIF3G antibody (A4240) at 1:1000 dilution. Secondary antibody: HRP Goat Anti-Rabbit IgG (H+L) (AS014) at 1:10000 dilution. Lysates/proteins: 25µg per lane. Blocking buffer: 3% nonfat dry milk in TBST. Detection: ECL Basic Kit (RM00020). Exposure time: 1s.



Immunofluorescence analysis of U-2 OS cells using EIF3G Polyclonal Antibody (A4240) at dilution of 1:100 (40x lens). Blue: DAPI for nuclear staining.