

A4191

Leader in Biomolecular Solutions for Life Science



REEP5 Rabbit pAb

Catalog No.: A4191 **1 Publications**

Basic Information

Observed MW

20kDa

Calculated MW

21kDa

Category

Mouse Monoclonal Antibody

Applications

WB

Cross-Reactivity

Human, Mouse

Background

Predicted to be involved in endoplasmic reticulum organization and regulation of intracellular transport. Located in endoplasmic reticulum tubular network.

Recommended Dilutions

WB 1:500 - 1:2000

Immunogen Information

Gene ID

7905

Swiss Prot

Q00765

Immunogen

A synthetic peptide of human REEP5

Synonyms

DPI1; TB2; YOP1; POB16; Yip2e; D5S346; C5orf18; REEP5

Contact



www.abclonal.com

Product Information

Source

Rabbit

Isotype

IgG

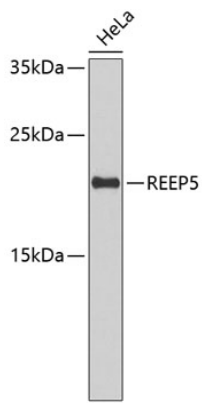
Purification

Affinity purification

Storage

Store at 4°C. Avoid freeze / thaw cycles.
Buffer: PBS with 0.02% sodium azide, pH 7.3.

Validation Data



Western blot analysis of extracts of HeLa cells, using REEP5 antibody (A4191).
Secondary antibody: HRP Goat Anti-Rabbit IgG (H+L) (AS014) at 1:10000 dilution.
Lysates/proteins: 25 μ g per lane.
Blocking buffer: 3% nonfat dry milk in TBST.