

# SLC20A1 Rabbit pAb

Catalog No.: A4117 **2 Publications**

## Basic Information

### Observed MW

70-100kDa

### Calculated MW

74kDa

### Category

Primary antibody

### Applications

ELISA, WB, IF/ICC

### Cross-Reactivity

Human, Mouse, Rat

## Background

The protein encoded by this gene is a sodium-phosphate symporter that absorbs phosphate from interstitial fluid for use in cellular functions such as metabolism, signal transduction, and nucleic acid and lipid synthesis. The encoded protein is also a retroviral receptor, causing human cells to be susceptible to infection by gibbon ape leukemia virus, simian sarcoma-associated virus, feline leukemia virus subgroup B, and 10A1 murine leukemia virus.

## Recommended Dilutions

<b>WB</b>	1:200 - 1:2000
<b>IF/ICC</b>	1:50 - 1:200

## Immunogen Information

<b>Gene ID</b>	<b>Swiss Prot</b>
6574	Q8WUM9

### Immunogen

Recombinant fusion protein containing a sequence corresponding to amino acids 257-356 of human SLC20A1 (NP\_005406.3).

### Synonyms

PIT1; GLVR1; PiT-1; Glvr-1; SLC20A1

## Contact

 | [www.abclonal.com](http://www.abclonal.com)

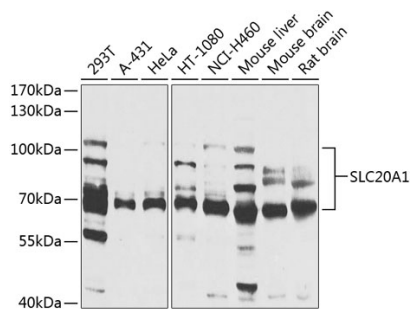
## Product Information

<b>Source</b>	<b>Isotype</b>	<b>Purification</b>
Rabbit	IgG	Affinity purification

### Storage

Store at -20°C. Avoid freeze / thaw cycles.  
Buffer: PBS with 0.02% sodium azide, 50% glycerol, pH7.3.

## Validation Data



Western blot analysis of extracts of various cell lines, using SLC20A1 antibody (A4117) at 1:1000 dilution.

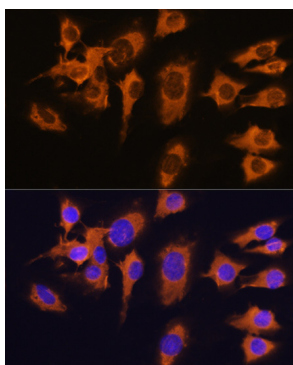
Secondary antibody: HRP Goat Anti-Rabbit IgG (H+L) (AS014) at 1:10000 dilution.

Lysates/proteins: 25µg per lane.

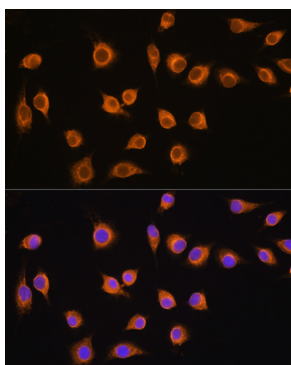
Blocking buffer: 3% nonfat dry milk in TBST.

Detection: ECL Basic Kit (RM00020).

Exposure time: 15s.



Immunofluorescence analysis of C6 cells using SLC20A1 antibody (A4117) at dilution of 1:100. Blue: DAPI for nuclear staining.



Immunofluorescence analysis of L929 cells using SLC20A1 antibody (A4117) at dilution of 1:100. Blue: DAPI for nuclear staining.