

A4109

Leader in Biomolecular Solutions for Life Science



# alpha Sarcoglycan (SGCA) Rabbit pAb

Catalog No.: A4109 **1 Publications**

## Basic Information

### Observed MW

43kDa

### Calculated MW

43kDa

### Category

Mouse Monoclonal Antibody

### Applications

WB,IF/ICC,ELISA

### Cross-Reactivity

Human,Mouse,Rat

## Background

This gene encodes a component of the dystrophin-glycoprotein complex (DGC), which is critical to the stability of muscle fiber membranes and to the linking of the actin cytoskeleton to the extracellular matrix. Its expression is thought to be restricted to striated muscle. Mutations in this gene result in type 2D autosomal recessive limb-girdle muscular dystrophy. Multiple transcript variants encoding different isoforms have been found for this gene.

## Recommended Dilutions

<b>WB</b>	1:500 - 1:2000
<b>IF/ICC</b>	1:50 - 1:200

## Immunogen Information

<b>Gene ID</b>	<b>Swiss Prot</b>
6442	Q16586

### Immunogen

Recombinant fusion protein containing a sequence corresponding to amino acids 60-290 of human alpha Sarcoglycan (alpha Sarcoglycan (SGCA)) (NP\_000014.1).

### Synonyms

ADL; DAG2; 50DAG; DMDA2; LGMD2D; LGMDR3; SCARMD1; adhalin; alpha Sarcoglycan (SGCA)

## Contact



[www.abclonal.com](http://www.abclonal.com)

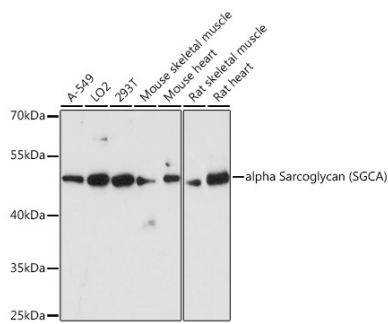
## Product Information

<b>Source</b>	<b>Isotype</b>	<b>Purification</b>
Rabbit	IgG	Affinity purification

### Storage

Store at -20°C. Avoid freeze / thaw cycles.  
Buffer: PBS with 0.01% thimerosal,50% glycerol,pH7.3.

## Validation Data



Western blot analysis of various lysates using alpha Sarcoglycan (SGCA) Rabbit pAb (A4109) at 1:3000 dilution.

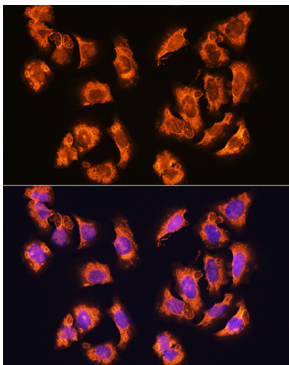
Secondary antibody: HRP Goat Anti-Rabbit IgG (H+L) (AS014) at 1:10000 dilution.

Lysates/proteins: 25µg per lane.

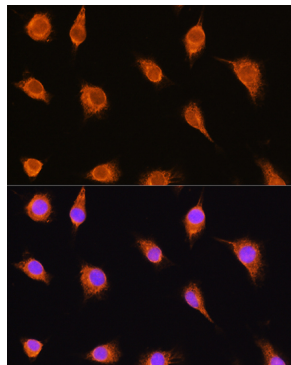
Blocking buffer: 3% nonfat dry milk in TBST.

Detection: ECL Basic Kit (RM00020).

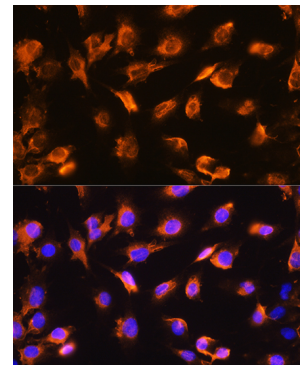
Exposure time: 90s.



Immunofluorescence analysis of U2OS cells using alpha Sarcoglycan (alpha Sarcoglycan (SGCA)) Rabbit pAb (A4109) at dilution of 1:100. Secondary antibody: Cy3 Goat Anti-Rabbit IgG (H+L) (AS007) at 1:500 dilution. Blue: DAPI for nuclear staining.



Immunofluorescence analysis of L929 cells using alpha Sarcoglycan (alpha Sarcoglycan (SGCA)) Rabbit pAb (A4109) at dilution of 1:100. Secondary antibody: Cy3 Goat Anti-Rabbit IgG (H+L) (AS007) at 1:500 dilution. Blue: DAPI for nuclear staining.



Immunofluorescence analysis of C6 cells using alpha Sarcoglycan (alpha Sarcoglycan (SGCA)) Rabbit pAb (A4109) at dilution of 1:100. Secondary antibody: Cy3 Goat Anti-Rabbit IgG (H+L) (AS007) at 1:500 dilution. Blue: DAPI for nuclear staining.