

# RTN2 Rabbit pAb

Catalog No.: A4100

## Basic Information

### Observed MW

62kDa

### Calculated MW

59kDa

### Category

Primary antibody

### Applications

WB

### Cross-Reactivity

Human

## Background

This gene belongs to the family of reticulon encoding genes. Reticulons are associated with the endoplasmic reticulum, and are involved in neuroendocrine secretion or in membrane trafficking in neuroendocrine cells. Reticulon proteins also play an important role in the replication of positive-strand RNA (ssRNA) viruses. Mutations at this locus have been associated with autosomal dominant spastic paraplegia-12.

## Recommended Dilutions

WB 1:500 - 1:1000

## Immunogen Information

### Gene ID

6253

### Swiss Prot

O75298

### Immunogen

A synthetic Peptide of human RTN2

### Synonyms

NSP2; NSPL1; NSPLI; SPG12; RTN2

## Contact

 | [www.abclonal.com](http://www.abclonal.com)

## Product Information

### Source

Rabbit

### Isotype

IgG

### Purification

Affinity purification

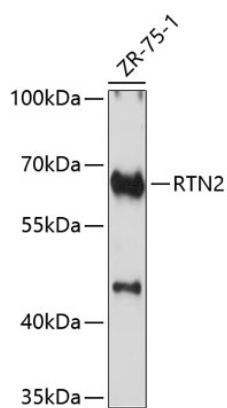
### Storage

Store at 4°C. Avoid freeze / thaw cycles.

Buffer: PBS with 0.02% sodium azide, pH7.3.

## Validation Data

---



Western blot analysis of extracts of ZR-75-1 cells, using RTN2 antibody (A4100).  
Secondary antibody: HRP Goat Anti-Rabbit IgG (H+L) (A5014) at 1:10000 dilution.  
Lysates/proteins: 25µg per lane.  
Blocking buffer: 3% nonfat dry milk in TBST.