

# RNH1 Rabbit pAb

Catalog No.: A4079 **1 Publications**

## Basic Information

**Observed MW**

43kDa

**Calculated MW**

50kDa

**Category**

Primary antibody

**Applications**

ELISA, WB, IF/ICC

**Cross-Reactivity**

Human, Mouse, Rat

## Background

Placental ribonuclease inhibitor (PRI) is a member of a family of proteinaceous cytoplasmic RNase inhibitors that occur in many tissues and bind to both intracellular and extracellular RNases (summarized by Lee et al., 1988 [PubMed 3219362]). In addition to control of intracellular RNases, the inhibitor may have a role in the regulation of angiogenin (MIM 105850). Ribonuclease inhibitor, of 50,000 Da, binds to ribonucleases and holds them in a latent form. Since neutral and alkaline ribonucleases probably play a critical role in the turnover of RNA in eukaryotic cells, RNH may be essential for control of mRNA turnover; the interaction of eukaryotic cells with ribonuclease may be reversible in vivo.

## Recommended Dilutions

**WB** 1:1000 - 1:2000**IF/ICC** 1:50 - 1:200

## Immunogen Information

**Gene ID**

6050

**Swiss Prot**

P13489

**Immunogen**

Recombinant fusion protein containing a sequence corresponding to amino acids 202-461 of human RNH1 (NP\_002930.2).

**Synonyms**

RAI; RNH; RNH1

## Contact

 | [www.abclonal.com](http://www.abclonal.com)

## Product Information

**Source**

Rabbit

**Isotype**

IgG

**Purification**

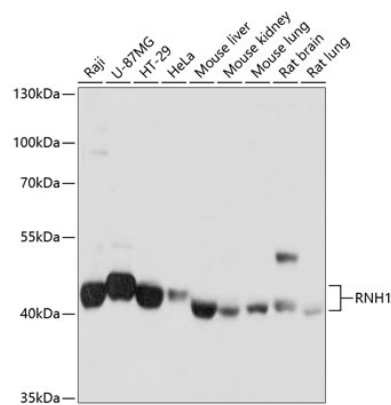
Affinity purification

**Storage**

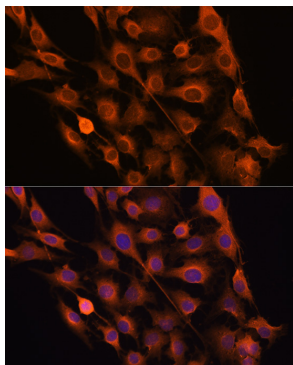
Store at -20°C. Avoid freeze / thaw cycles.

Buffer: PBS with 0.02% sodium azide, 50% glycerol, pH7.3.

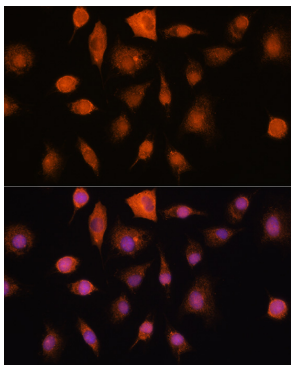
# Validation Data



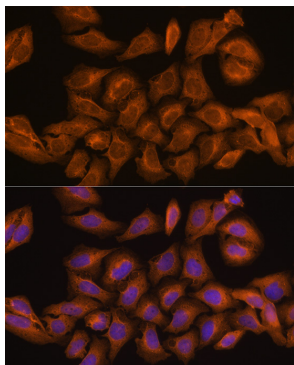
Western blot analysis of extracts of various cell lines, using RNH1 antibody (A4079) at 1:1000 dilution. Secondary antibody: HRP Goat Anti-Rabbit IgG (H+L) (AS014) at 1:10000 dilution. Lysates/proteins: 25µg per lane. Blocking buffer: 3% nonfat dry milk in TBST. Detection: ECL Basic Kit (RM00020). Exposure time: 1s.



Immunofluorescence analysis of C6 cells using RNH1 Rabbit pAb (A4079) at dilution of 100 (40x lens). Blue: DAPI for nuclear staining.



Immunofluorescence analysis of L929 cells using RNH1 Rabbit pAb (A4079) at dilution of 100 (40x lens). Blue: DAPI for nuclear staining.



Immunofluorescence analysis of U-2 OS cells using RNH1 Rabbit pAb (A4079) at dilution of 100 (40x lens). Blue: DAPI for nuclear staining.