

RBM4 Rabbit pAb

Catalog No.: A4073

Basic Information

Observed MW

40kDa

Calculated MW

40kDa

Category

Primary antibody

Applications

WB

Cross-Reactivity

Human

Background

Enables RNA binding activity and cyclin binding activity. Involved in several processes, including IRES-dependent translational initiation of linear mRNA; negative regulation of translation; and regulation of alternative mRNA splicing, via spliceosome. Located in cytoplasmic stress granule; cytosol; and nuclear lumen.

Recommended Dilutions

WB 1:500 - 1:2000

Immunogen Information

Gene ID

5936

Swiss Prot

Q9BWF3

Immunogen

A synthetic Peptide of human RBM4

Synonyms

LARK; RBM4A; ZCRB3A; ZCCHC21; RBM4

Contact

 | www.abclonal.com

Product Information

Source

Rabbit

Isotype

IgG

Purification

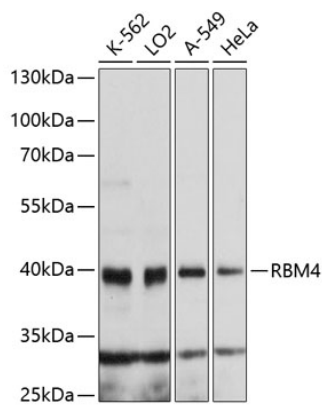
Affinity purification

Storage

Store at 4°C. Avoid freeze / thaw cycles.

Buffer: PBS with 0.02% sodium azide, pH7.3.

Validation Data



Western blot analysis of various lysates using RBM4 Rabbit pAb (A4073) at 1:1000 dilution.
Secondary antibody: HRP Goat Anti-Rabbit IgG (H+L) (AS014) at 1:10000 dilution.
Lysates/proteins: 25µg per lane.
Blocking buffer: 3% nonfat dry milk in TBST.
Detection: ECL Basic Kit (RM00020).
Exposure time: 90s.