

# PP2A-B56 $\alpha$ /PR61A/PPP2R5A Rabbit pAb

Catalog No.: A4037

## Basic Information

### Observed MW

57kDa

### Calculated MW

56kDa

### Category

Primary antibody

### Applications

WB

### Cross-Reactivity

Mouse

## Background

The product of this gene belongs to the phosphatase 2A regulatory subunit B family. Protein phosphatase 2A is one of the four major Ser/Thr phosphatases, and it is implicated in the negative control of cell growth and division. It consists of a common heteromeric core enzyme, which is composed of a catalytic subunit and a constant regulatory subunit, that associates with a variety of regulatory subunits. The B regulatory subunit might modulate substrate selectivity and catalytic activity. This gene encodes an alpha isoform of the regulatory subunit B56 subfamily. Alternative transcript variants encoding distinct isoforms have been found for this gene.

## Recommended Dilutions

WB 1:500 - 1:1000

## Immunogen Information

### Gene ID

5525

### Swiss Prot

Q15172

### Immunogen

A synthetic Peptide of human PP2A-B56 $\alpha$ /PR61A/PP2A-B56 $\alpha$ /PR61A/PPP2R5A

### Synonyms

B56A; PR61A; B56alpha; PP2A-B56 $\alpha$ /PR61A/PPP2R5A

## Contact

 | [www.abclonal.com](http://www.abclonal.com)

## Product Information

### Source

Rabbit

### Isotype

IgG

### Purification

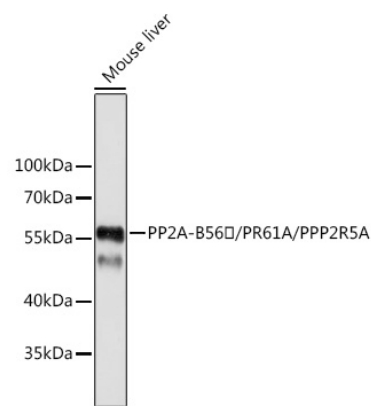
Affinity purification

### Storage

Store at 4°C. Avoid freeze / thaw cycles.

Buffer: PBS with 0.02% sodium azide, pH7.3.

# Validation Data



Western blot analysis of extracts of mouse liver, using PP2A-B56α/PR61A/PP2A-B56α/PR61A/PPP2R5A antibody (A4037).  
Secondary antibody: HRP Goat Anti-Rabbit IgG (H+L) (A5014) at 1:10000 dilution.  
Lysates/proteins: 25µg per lane.  
Blocking buffer: 3% nonfat dry milk in TBST.