

PITX1 Rabbit pAb

Catalog No.: A4022

Basic Information

Observed MW

40kDa

Calculated MW

34kDa

Category

Primary antibody

Applications

ELISA, WB

Cross-Reactivity

Rat

Background

This gene encodes a member of the RIEG/PITX homeobox family, which is in the bicoid class of homeodomain proteins. Members of this family are involved in organ development and left-right asymmetry. This protein acts as a transcriptional regulator involved in basal and hormone-regulated activity of prolactin.

Recommended Dilutions

WB 1:500 - 1:2000

Immunogen Information

Gene ID

5307

Swiss Prot

P78337

Immunogen

Recombinant fusion protein containing a sequence corresponding to amino acids 1-80 of human PITX1 (NP_002644.4).

Synonyms

BFT; CCF; POTX; PTX1; LBNBG; PITX1

Contact

 | www.abclonal.com

Product Information

Source

Rabbit

Isotype

IgG

Purification

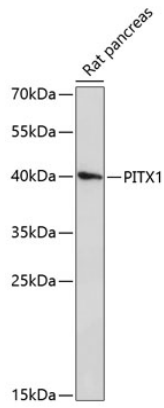
Affinity purification

Storage

Store at -20°C. Avoid freeze / thaw cycles.

Buffer: PBS with 0.01% thimerosal, 50% glycerol, pH7.3.

Validation Data



Western blot analysis of extracts of rat pancreas, using PITX1 antibody (A4022) at 1:3000 dilution.
Secondary antibody: HRP Goat Anti-Rabbit IgG (H+L) (AS014) at 1:10000 dilution.
Lysates/proteins: 25µg per lane.
Blocking buffer: 3% nonfat dry milk in TBST.
Detection: ECL Basic Kit (RM00020).
Exposure time: 90s.