

A4020

Leader in Biomolecular Solutions for Life Science

## SERPINB8 Rabbit pAb

Catalog No.: A4020



### Basic Information

---

**Observed MW**

51kDa

**Calculated MW**

43kDa

**Category**

Polyclonal Antibody

**Applications**

WB

**Cross-Reactivity**

Human

### Background

---

The protein encoded by this gene is a member of the ov-serpin family of serine protease inhibitors. The encoded protein is produced by platelets and can bind to and inhibit the function of furin, a serine protease involved in platelet functions. In addition, this protein has been found to enhance the mechanical stability of cell-cell adhesion in the skin, and defects in this gene have been associated with an autosomal-recessive form of exfoliative ichthyosis.

### Recommended Dilutions

---

WB 1:500 - 1:1000

### Immunogen Information

---

**Gene ID**

5271

**Swiss Prot**

P50452

**Immunogen**

A synthetic Peptide of human SERPINB8

**Synonyms**

PI8; CAP2; PI-8; PSS5; C18orf53; SERPINB8

### Contact

---



[www.abclonal.com](http://www.abclonal.com)

### Product Information

---

**Source**

Rabbit

**Isotype**

IgG

**Purification**

Affinity purification

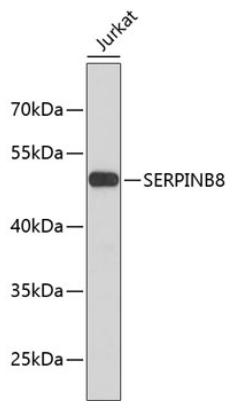
**Storage**

Store at 4°C. Avoid freeze / thaw cycles.

Buffer: PBS with 0.02% sodium azide, pH7.3.

## Validation Data

---



Western blot analysis of extracts of Jurkat cells, using SERPINB8 antibody (A4020).  
Secondary antibody: HRP Goat Anti-Rabbit IgG (H+L) (AS014) at 1:10000 dilution.  
Lysates/proteins: 25µg per lane.  
Blocking buffer: 3% nonfat dry milk in TBST.