

A3987

Leader in Biomolecular Solutions for Life Science



## DRG1 Rabbit pAb

Catalog No.: A3987

1 Publications

### Basic Information

#### Observed MW

41kDa

#### Calculated MW

41kDa

#### Category

Mouse Monoclonal Antibody

#### Applications

WB, ELISA

#### Cross-Reactivity

Human, Mouse, Rat

### Background

Enables several functions, including GTPase activity; identical protein binding activity; and potassium ion binding activity. Involved in positive regulation of microtubule polymerization and regulation of mitotic spindle assembly. Located in cytosol and nuclear body. Part of polysome.

### Recommended Dilutions

WB 1:500 - 1:2000

### Immunogen Information

#### Gene ID

4733

#### Swiss Prot

Q9Y295

#### Immunogen

Recombinant fusion protein containing a sequence corresponding to amino acids 158-367 of human DRG1 (NP\_004138.1).

#### Synonyms

NEDD3; DRG1

### Contact



[www.abclonal.com](http://www.abclonal.com)

### Product Information

#### Source

Rabbit

#### Isotype

IgG

#### Purification

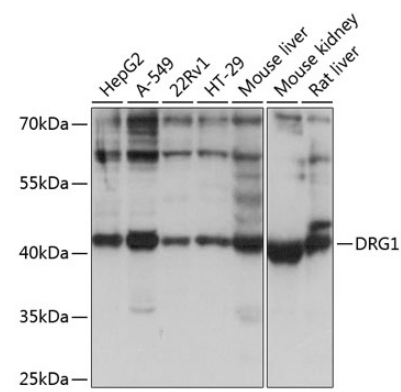
Affinity purification

#### Storage

Store at -20°C. Avoid freeze / thaw cycles.

Buffer: PBS with 0.01% thimerosal, 50% glycerol, pH 7.3.

Validation Data



Western blot analysis of various lysates using DRG1 Rabbit pAb (A3987) at 1:1000 dilution.  
Secondary antibody: HRP Goat Anti-Rabbit IgG (H+L) (AS014) at 1:10000 dilution.  
Lysates/proteins: 25µg per lane.  
Blocking buffer: 3% nonfat dry milk in TBST.  
Detection: ECL Basic Kit (RM00020).  
Exposure time: 5s.