

A3982

Leader in Biomolecular Solutions for Life Science



NDUFB10 Rabbit pAb

Catalog No.: A3982

1 Publications

Basic Information

Observed MW

21kDa

Calculated MW

21kDa

Category

Mouse Monoclonal Antibody

Applications

WB,IP,ELISA

Cross-Reactivity

Human,Mouse,Rat

Background

Involved in mitochondrial respiratory chain complex I assembly. Located in mitochondrial inner membrane. Part of mitochondrial respiratory chain complex I. Implicated in nuclear type mitochondrial complex I deficiency 35.

Recommended Dilutions

WB 1:500 - 1:2000

IP 0.5µg-4µg antibody for
200µg-400µg extracts of
whole cells

Immunogen Information

Gene ID

4716

Swiss Prot

O96000

Immunogen

Recombinant fusion protein containing a sequence corresponding to amino acids 1-172 of human NDUFB10 (NP_004539.1).

Synonyms

PDSW; MC1DN35; NDUFB10

Contact



www.abclonal.com

Product Information

Source

Rabbit

Isotype

IgG

Purification

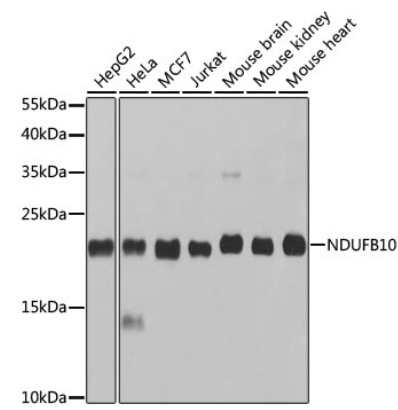
Affinity purification

Storage

Store at -20°C. Avoid freeze / thaw cycles.

Buffer: PBS with 0.02% sodium azide,50% glycerol,pH7.3.

Validation Data



Western blot analysis of various lysates using NDUFB10 Rabbit pAb (A3982) at 1:1000 dilution.
Secondary antibody: HRP Goat Anti-Rabbit IgG (H+L) (A5014) at 1:10000 dilution.
Lysates/proteins: 25µg per lane.
Blocking buffer: 3% nonfat dry milk in TBST.
Detection: ECL Basic Kit (RM00020).
Exposure time: 10s.

Immunoprecipitation analysis of 200 µg extracts of HeLa cells, using 3 µg NDUFB10 antibody (A3982).
Western blot was performed from the immunoprecipitate using NDUFB10 antibody (A3982) at a dilution of 1:1000.

