

A3975

Leader in Biomolecular Solutions for Life Science



CENPC Rabbit mAb

Catalog No.: A3975

Recombinant

1 Publications

Basic Information

Observed MW

107kDa

Calculated MW

107kDa

Category

SMab Recombinant Monoclonal
Antibody

Applications

WB,IF/ICC,ELISA

Cross-Reactivity

Human,Rat

CloneNo number

ARC2097

Recommended Dilutions

WB 1:500 - 1:2000

IF/ICC 1:50 - 1:200

Background

Centromere protein C 1 is a centromere autoantigen and a component of the inner kinetochore plate. The protein is required for maintaining proper kinetochore size and a timely transition to anaphase. A putative pseudogene exists on chromosome 12.

Immunogen Information

Gene ID

1060

Swiss Prot

Q03188

Immunogen

Recombinant fusion protein containing a sequence corresponding to amino acids 380-520 of human CENPC (Q03188).

Synonyms

MIF2; hcp-4; CENP-C; CENPC1; CENPC

Contact

 www.abclonal.com

Product Information

Source

Rabbit

Isotype

IgG

Purification

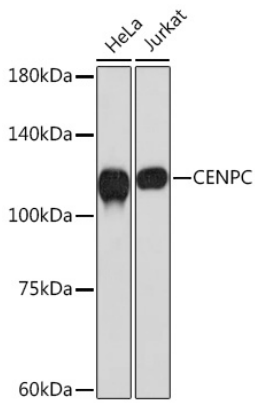
Affinity purification

Storage

Store at -20°C. Avoid freeze / thaw cycles.

Buffer: PBS with 0.02% sodium azide,0.05% BSA,50% glycerol,pH7.3.

Validation Data



Western blot analysis of extracts of various cell lines, using CENPC Rabbit mAb (A3975) at 1:1000 dilution.

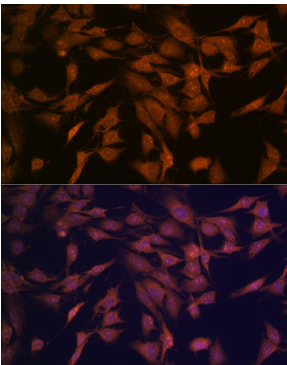
Secondary antibody: HRP Goat Anti-Rabbit IgG (H+L) (AS014) at 1:10000 dilution.

Lysates/proteins: 25µg per lane.

Blocking buffer: 3% nonfat dry milk in TBST.

Detection: ECL Basic Kit (RM00020).

Exposure time: 30s.



Immunofluorescence analysis of C6 cells using CENPC Rabbit mAb (A3975) at dilution of 1:100 (40x lens). Blue: DAPI for nuclear staining.