

A3924

Leader in Biomolecular Solutions for Life Science



# IFIT3 Rabbit pAb

Catalog No.: A3924 **4 Publications**

## Basic Information

### Observed MW

60kDa

### Calculated MW

56kDa

### Category

Mouse Monoclonal Antibody

### Applications

WB,IHC-P,ELISA

### Cross-Reactivity

Human,Mouse,Rat

## Background

Predicted to enable RNA binding activity and identical protein binding activity. Acts upstream of or within cellular response to interferon-beta; response to bacterium; and response to stilbenoid. Predicted to be located in mitochondrion. Predicted to be active in cytosol. Is expressed in alimentary system; eye; face; and nervous system. Orthologous to human IFIT3 (interferon induced protein with tetratricopeptide repeats 3).

## Recommended Dilutions

**WB** 1:500 - 1:1000

**IHC-P** 1:100 - 1:200

## Immunogen Information

### Gene ID

15959

### Swiss Prot

O14879

### Immunogen

Recombinant fusion protein containing a sequence corresponding to amino acids 128-331 of mouse IFIT3 (NP\_034631.1).

### Synonyms

P49; Ifi49; IFIT3

## Contact



[www.abclonal.com](http://www.abclonal.com)

## Product Information

### Source

Rabbit

### Isotype

IgG

### Purification

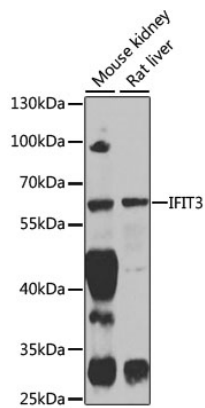
Affinity purification

### Storage

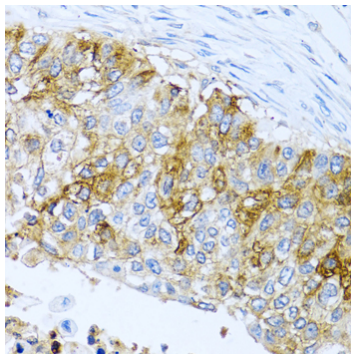
Store at -20°C. Avoid freeze / thaw cycles.

Buffer: PBS with 0.02% sodium azide,50% glycerol,pH7.3.

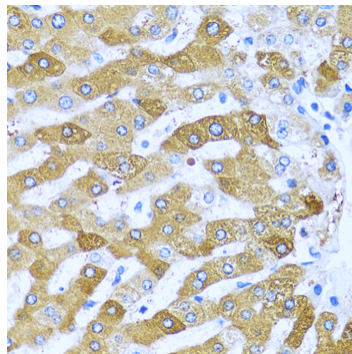
## Validation Data



Western blot analysis of extracts of various cell lines, using IFIT3 antibody (A3924) at 1:1000 dilution.  
Secondary antibody: HRP Goat Anti-Rabbit IgG (H+L) (AS014) at 1:10000 dilution.  
Lysates/proteins: 25µg per lane.  
Blocking buffer: 3% nonfat dry milk in TBST.  
Detection: ECL Enhanced Kit (RM00021).  
Exposure time: 60s.



Immunohistochemistry analysis of paraffin-embedded human lung cancer using IFIT3 antibody (A3924) at dilution of 1:100 (40x lens). Perform microwave antigen retrieval with 10 mM PBS buffer pH 7.2 before commencing with IHC staining protocol.



Immunohistochemistry analysis of paraffin-embedded human liver using IFIT3 antibody (A3924) at dilution of 1:100 (40x lens). Perform microwave antigen retrieval with 10 mM PBS buffer pH 7.2 before commencing with IHC staining protocol.