

GPS1 Rabbit pAb

Catalog No.: A3900

Basic Information

Observed MW

54kDa

Calculated MW

56kDa

Category

Primary antibody

Applications

WB

Cross-Reactivity

Mouse

Background

This gene is known to suppress G-protein and mitogen-activated signal transduction in mammalian cells. The encoded protein shares significant similarity with Arabidopsis FUS6, which is a regulator of light-mediated signal transduction in plant cells.

Recommended Dilutions

WB 1:500 - 1:1000

Immunogen Information

Gene ID

2873

Swiss Prot

Q13098

Immunogen

A synthetic peptide of human GPS1

Synonyms

CSN1; SGN1; COPS1; GPS1

Contact

 | www.abclonal.com

Product Information

Source

Rabbit

Isotype

IgG

Purification

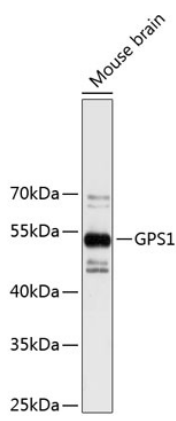
Affinity purification

Storage

Store at 4°C. Avoid freeze / thaw cycles.

Buffer: PBS with 0.02% sodium azide, pH 7.3.

Validation Data



Western blot analysis of extracts of mouse brain, using GPS1 antibody (A3900).
Secondary antibody: HRP Goat Anti-Rabbit IgG (H+L) (A5014) at 1:10000 dilution.
Lysates/proteins: 25µg per lane.
Blocking buffer: 3% nonfat dry milk in TBST.