

# GOT2 Rabbit pAb

Catalog No.: A3893

## Basic Information

---

### Observed MW

47kDa

### Calculated MW

48kDa

### Category

Primary antibody

### Applications

WB,FC

### Cross-Reactivity

Human

## Background

---

Glutamic-oxaloacetic transaminase is a pyridoxal phosphate-dependent enzyme which exists in cytoplasmic and inner-membrane mitochondrial forms, GOT1 and GOT2, respectively. GOT plays a role in amino acid metabolism and the urea and tricarboxylic acid cycles. The two enzymes are homodimeric and show close homology. Two transcript variants encoding different isoforms have been found for this gene.

## Recommended Dilutions

---

<b>WB</b>	1:500 - 1:1000
<b>FC</b>	1:20 - 1:50

## Immunogen Information

---

<b>Gene ID</b>	<b>Swiss Prot</b>
2806	P00505

### Immunogen

A synthetic peptide of human GOT2

### Synonyms

KAT4; DEE82; KATIV; KYAT4; mitAAT; GOT2

## Contact

---

 | [www.abclonal.com](http://www.abclonal.com)

## Product Information

---

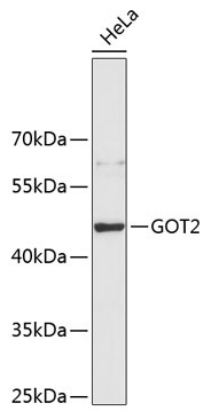
<b>Source</b>	<b>Isotype</b>	<b>Purification</b>
Rabbit	IgG	Affinity purification

### Storage

Store at 4°C. Avoid freeze / thaw cycles.  
Buffer: PBS with 0.02% sodium azide,pH7.3.

## Validation Data

---



Western blot analysis of extracts of HeLa cells, using GOT2 antibody (A3893).  
Secondary antibody: HRP Goat Anti-Rabbit IgG (H+L) (AS014) at 1:10000 dilution.  
Lysates/proteins: 25µg per lane.  
Blocking buffer: 3% nonfat dry milk in TBST.