

ECHS1 Rabbit pAb

Catalog No.: A3845 **1 Publications**

Basic Information

Observed MW

31kDa

Calculated MW

31kDa

Category

Primary antibody

Applications

ELISA, WB, IF/ICC

Cross-Reactivity

Human, Mouse, Rat

Background

The protein encoded by this gene functions in the second step of the mitochondrial fatty acid beta-oxidation pathway. It catalyzes the hydration of 2-trans-enoyl-coenzyme A (CoA) intermediates to L-3-hydroxyacyl-CoAs. The gene product is a member of the hydratase/isomerase superfamily. It localizes to the mitochondrial matrix. Transcript variants utilizing alternative transcription initiation sites have been described in the literature.

Recommended Dilutions

WB	1:1000 - 1:2000
IF/ICC	1:50 - 1:200

Immunogen Information

Gene ID	Swiss Prot
1892	P30084

Immunogen

Recombinant fusion protein containing a sequence corresponding to amino acids 28-290 of human ECHS1 (NP_004083.3).

Synonyms

SCEH; mECH; mECH1; ECHS1D; ECHS1

Contact

 | www.abclonal.com

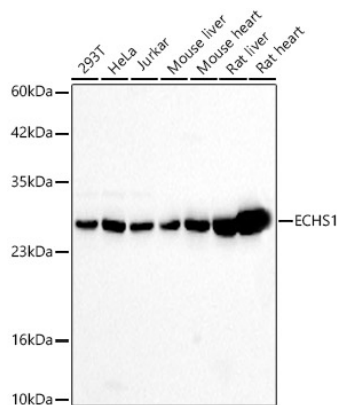
Product Information

Source	Isotype	Purification
Rabbit	IgG	Affinity purification

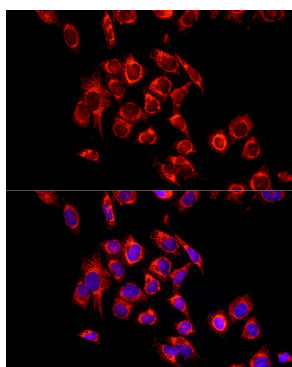
Storage

Store at -20°C. Avoid freeze / thaw cycles.
Buffer: PBS with 0.02% sodium azide, 50% glycerol, pH7.3.

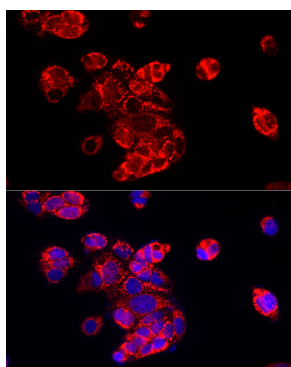
Validation Data



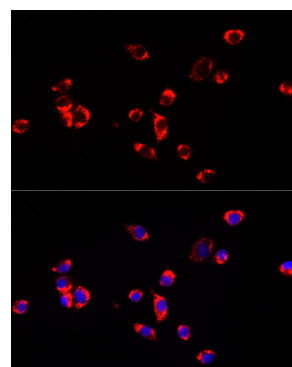
Western blot analysis of various lysates using ECHS1 Rabbit pAb (A3845) at 1:1000 dilution. Secondary antibody: HRP Goat Anti-Rabbit IgG (H+L)(A5014) at 1:10000 dilution. Lysates / proteins: 25 µg per lane. Blocking buffer: 3 % nonfat dry milk in TBST. Detection: ECL Basic Kit (RM00020). Exposure time: 30s.



Immunofluorescence analysis of HeLa cells using ECHS1 Rabbit pAb (A3845) at dilution of 1:100 (40x lens). Blue: DAPI for nuclear staining.



Immunofluorescence analysis of MCF7 cells using ECHS1 Rabbit pAb (A3845) at dilution of 1:100 (40x lens). Blue: DAPI for nuclear staining.



Immunofluorescence analysis of NIH/3T3 cells using ECHS1 Rabbit pAb (A3845) at dilution of 1:100 (40x lens). Blue: DAPI for nuclear staining.