

A3831

Leader in Biomolecular Solutions for Life Science



DNASE1L1 Rabbit pAb

Catalog No.: A3831

Basic Information

Observed MW

36kDa

Calculated MW

34kDa

Category

Polyclonal Antibody

Applications

WB,ELISA

Cross-Reactivity

Human

Background

This gene encodes a deoxyribonuclease protein that shows high sequence similarity to DNase I. The encoded protein is localized to the endoplasmic reticulum and modified by N-linked glycosylation. Alternate transcriptional splice variants encoding the same protein have been observed.

Recommended Dilutions

WB 1:200 - 1:2000

Immunogen Information

Gene ID

1774

Swiss Prot

P49184

Immunogen

Recombinant fusion protein containing a sequence corresponding to amino acids 1-302 of human DNASE1L1 (NP_006721.1).

Synonyms

XIB; G4.8; DNL1L; DNASEX; DNAS1L1; DNASE1L1

Contact



www.abclonal.com

Product Information

Source

Rabbit

Isotype

IgG

Purification

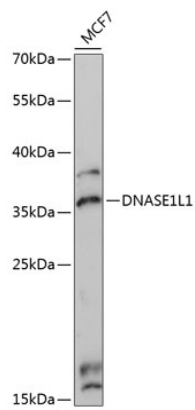
Affinity purification

Storage

Store at -20°C. Avoid freeze / thaw cycles.

Buffer: PBS with 0.01% thimerosal,50% glycerol,pH7.3.

Validation Data



Western blot analysis of lysates from MCF7 cells, using DNASE1L1 Rabbit pAb (A3831) at 1:3000 dilution.
Secondary antibody: HRP Goat Anti-Rabbit IgG (H+L) (AS014) at 1:10000 dilution.
Lysates/proteins: 25 μ g per lane.
Blocking buffer: 3% nonfat dry milk in TBST.
Detection: ECL Enhanced Kit (RM00021).
Exposure time: 90s.