

CSTB Rabbit pAb

Catalog No.: A3815 **2 Publications**

Basic Information

Observed MW

14kDa

Calculated MW

11kDa

Category

Primary antibody

Applications

ELISA,WB

Cross-Reactivity

Human,Rat

Background

The cystatin superfamily encompasses proteins that contain multiple cystatin-like sequences. Some of the members are active cysteine protease inhibitors, while others have lost or perhaps never acquired this inhibitory activity. There are three inhibitory families in the superfamily, including the type 1 cystatins (stefins), type 2 cystatins and kininogens. This gene encodes a stefin that functions as an intracellular thiol protease inhibitor. The protein is able to form a dimer stabilized by noncovalent forces, inhibiting papain and cathepsins L, H and B. The protein is thought to play a role in protecting against the proteases leaking from lysosomes. Evidence indicates that mutations in this gene are responsible for the primary defects in patients with progressive myoclonic epilepsy (EPM1). One type of mutation responsible for EPM1 is the expansion in the promoter region of this gene of a CCCC GCCCGCG repeat from 2-3 copies to 30-78 copies.

Recommended Dilutions

WB 1:500 - 1:1000

Immunogen Information

Gene ID

1476

Swiss Prot

P04080

Immunogen

Recombinant fusion protein containing a sequence corresponding to amino acids 1-98 of human CSTB (NP_000091.1).

Synonyms

PME; ULD; CST6; EPM1; STFB; CPI-B; EPM1A; CSTB

Contact

 | www.abclonal.com

Product Information

Source

Rabbit

Isotype

IgG

Purification

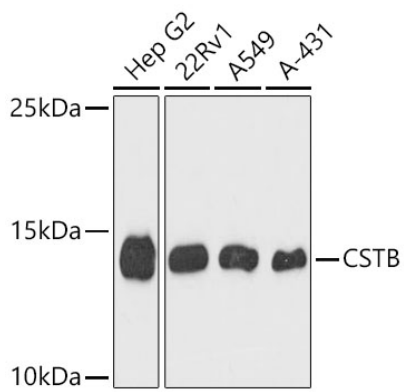
Affinity purification

Storage

Store at -20°C. Avoid freeze / thaw cycles.

Buffer: PBS with 0.02% sodium azide, 50% glycerol, pH 7.3.

Validation Data



Western blot analysis of various lysates using CSTB Rabbit pAb (A3815) at 1:1000 dilution.
Secondary antibody: HRP Goat Anti-Rabbit IgG (H+L) (AS014) at 1:10000 dilution.
Lysates / proteins: 25 µg per lane.
Blocking buffer: 3 % nonfat dry milk in TBST.
Detection: ECL Basic Kit (RM00020).
Exposure time: 90s.