

A3803

Leader in Biomolecular Solutions for Life Science



# CPA1 Rabbit pAb

Catalog No.: A3803

## Basic Information

### Observed MW

45kDa

### Calculated MW

47kDa

### Category

Mouse Monoclonal Antibody

### Applications

WB,IF/ICC,ELISA

### Cross-Reactivity

Human,Mouse,Rat

## Background

This gene encodes a member of the carboxypeptidase A family of zinc metalloproteases. This enzyme is produced in the pancreas and preferentially cleaves C-terminal branched-chain and aromatic amino acids from dietary proteins. This gene and several family members are present in a gene cluster on chromosome 7. Mutations in this gene may be linked to chronic pancreatitis, while elevated protein levels may be associated with pancreatic cancer.

## Recommended Dilutions

WB 1:500 - 1:1000

IF/ICC 1:50 - 1:200

## Immunogen Information

### Gene ID

1357

### Swiss Prot

P15085

### Immunogen

A synthetic peptide corresponding to a sequence within amino acids 1-100 of human CPA1 (NP\_001859.1).

### Synonyms

CPA; CPA1

## Contact



[www.abclonal.com](http://www.abclonal.com)

## Product Information

### Source

Rabbit

### Isotype

IgG

### Purification

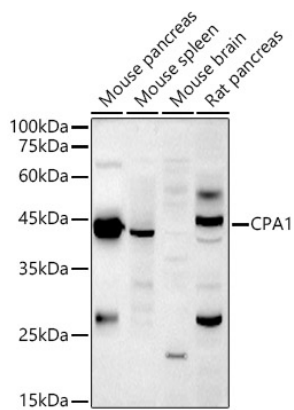
Affinity purification

### Storage

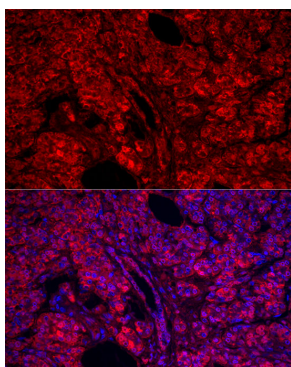
Store at -20°C. Avoid freeze / thaw cycles.

Buffer: PBS with 0.05% proclin300,50% glycerol,pH7.3.

## Validation Data



Western blot analysis of extracts of various cell lines, using CPA1 antibody (A3803) at 1:1000 dilution.  
Secondary antibody: HRP Goat Anti-Rabbit IgG (H+L) (AS014) at 1:10000 dilution.  
Lysates/proteins: 25µg per lane.  
Blocking buffer: 3% nonfat dry milk in TBST.  
Detection: ECL Basic Kit (RM00020).  
Exposure time: 180s.



Immunofluorescence analysis of human pancreas cells using CPA1 Rabbit pAb (A3803) at dilution of 1:100 (40x lens). Blue: DAPI for nuclear staining.