

# COL6A2 Rabbit pAb

Catalog No.: A3796 **1 Publications**

## Basic Information

### Observed MW

108kDa

### Calculated MW

109kDa

### Category

Primary antibody

### Applications

ELISA, WB

### Cross-Reactivity

Human, Mouse

## Background

This gene encodes one of the three alpha chains of type VI collagen, a beaded filament collagen found in most connective tissues. The product of this gene contains several domains similar to von Willebrand Factor type A domains. These domains have been shown to bind extracellular matrix proteins, an interaction that explains the importance of this collagen in organizing matrix components. Mutations in this gene are associated with Bethlem myopathy and Ullrich scleroatonic muscular dystrophy. Three transcript variants have been identified for this gene.

## Recommended Dilutions

**WB** 1:200 - 1:2000

## Immunogen Information

### Gene ID

1292

### Swiss Prot

P12110

### Immunogen

Recombinant fusion protein containing a sequence corresponding to amino acids 720-1019 of human COL6A2 (NP\_001840.3).

### Synonyms

UCMD1; BTHLM1; PP3610; COL6A2

## Contact

 | [www.abclonal.com](http://www.abclonal.com)

## Product Information

### Source

Rabbit

### Isotype

IgG

### Purification

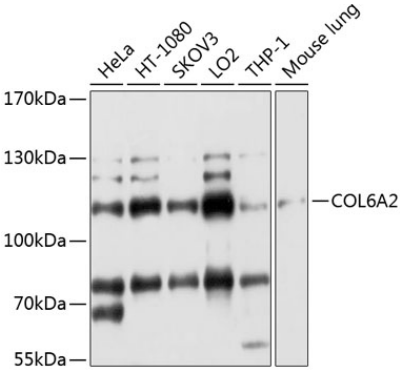
Affinity purification

### Storage

Store at -20°C. Avoid freeze / thaw cycles.

Buffer: PBS with 0.02% sodium azide, 50% glycerol, pH7.3.

## Validation Data



Western blot analysis of extracts of various cell lines, using COL6A2 antibody (A3796) at 1:1000 dilution.  
Secondary antibody: HRP Goat Anti-Rabbit IgG (H+L) (A5014) at 1:10000 dilution.  
Lysates/proteins: 25µg per lane.  
Blocking buffer: 3% nonfat dry milk in TBST.  
Detection: ECL Basic Kit (RM00020).  
Exposure time: 40s.