

CKS2 Rabbit pAb

Catalog No.: A3791

Basic Information

Observed MW

14kDa

Calculated MW

10kDa

Category

Primary antibody

Applications

ELISA, WB

Cross-Reactivity

Rat

Background

CKS2 protein binds to the catalytic subunit of the cyclin dependent kinases and is essential for their biological function. The CKS2 mRNA is found to be expressed in different patterns through the cell cycle in HeLa cells, which reflects specialized role for the encoded protein.

Recommended Dilutions

WB 1:500 - 1:2000

Immunogen Information

Gene ID

1164

Swiss Prot

P33552

Immunogen

Recombinant fusion protein containing a sequence corresponding to amino acids 1-79 of human CKS2 (NP_001818.1).

Synonyms

CKSH52; CKS2

Contact

 | www.abclonal.com

Product Information

Source

Rabbit

Isotype

IgG

Purification

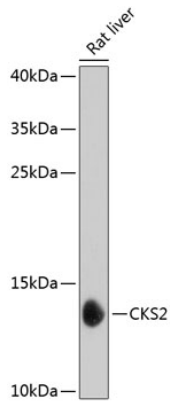
Affinity purification

Storage

Store at -20°C. Avoid freeze / thaw cycles.

Buffer: PBS with 0.02% sodium azide, 50% glycerol, pH7.3.

Validation Data



Western blot analysis of extracts of rat liver, using CKS2 antibody (A3791) at 1:1000 dilution.
Secondary antibody: HRP Goat Anti-Rabbit IgG (H+L) (AS014) at 1:10000 dilution.
Lysates/proteins: 25 μ g per lane.
Blocking buffer: 3% nonfat dry milk in TBST.
Detection: ECL Basic Kit (RM00020).
Exposure time: 30s.