

CETN1 Rabbit pAb

Catalog No.: A3784

Basic Information

Observed MW

20kDa

Calculated MW

20kDa

Category

Primary antibody

Applications

ELISA, WB

Cross-Reactivity

Human, Mouse, Rat

Background

The protein encoded by this gene plays important roles in the determination of centrosome position and segregation, and in the process of microtubule severing. This protein is localized to the centrosome of interphase cells, and redistributes to the region of the spindle poles during mitosis, reflecting the dynamic behavior of the centrosome during the cell cycle.

Recommended Dilutions

WB 1:500 - 1:2000

Immunogen Information

Gene ID

1068

Swiss Prot

Q12798

Immunogen

Recombinant fusion protein containing a sequence corresponding to amino acids 1-172 of human CETN1 (NP_004057.1).

Synonyms

CEN1; CETN; CETN1

Contact

 | www.abclonal.com

Product Information

Source

Rabbit

Isotype

IgG

Purification

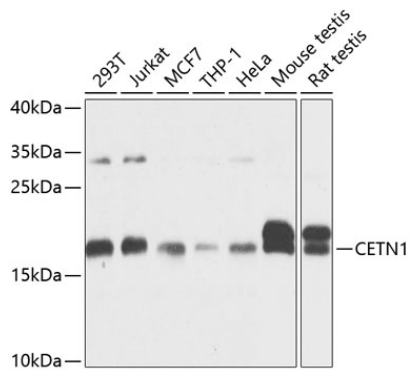
Affinity purification

Storage

Store at -20°C. Avoid freeze / thaw cycles.

Buffer: PBS with 0.02% sodium azide, 50% glycerol, pH7.3.

Validation Data



Western blot analysis of extracts of various cell lines, using CETN1 antibody (A3784) at 1:1000 dilution.

Secondary antibody: HRP Goat Anti-Rabbit IgG (H+L) (AS014) at 1:10000 dilution.

Lysates/proteins: 25µg per lane.

Blocking buffer: 3% nonfat dry milk in TBST.

Detection: ECL Basic Kit (RM00020).

Exposure time: 10s.