

CCIN Rabbit pAb

Catalog No.: A3777

Basic Information

Observed MW

72kDa

Calculated MW

67kDa

Category

Primary antibody

Applications

WB

Cross-Reactivity

Human

Background

The protein encoded by this gene is a basic protein of the sperm head cytoskeleton. This protein contains kelch repeats and a BTB/POZ domain and is necessary for normal morphology during sperm differentiation. This gene is intronless.

Recommended Dilutions

WB 1:500 - 1:1000

Immunogen Information

Gene ID

881

Swiss Prot

Q13939

Immunogen

A synthetic peptide of human CCIN

Synonyms

BTBD20; KBTBD14; CCIN

Contact

 | www.abclonal.com

Product Information

Source

Rabbit

Isotype

IgG

Purification

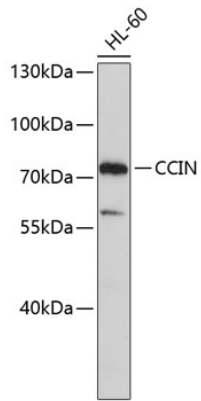
Affinity purification

Storage

Store at 4°C. Avoid freeze / thaw cycles.

Buffer: PBS with 0.02% sodium azide, pH7.3.

Validation Data



Western blot analysis of extracts of HL-60 cells, using CCIN antibody (A3777).
Secondary antibody: HRP Goat Anti-Rabbit IgG (H+L) (AS014) at 1:10000 dilution.
Lysates/proteins: 25µg per lane.
Blocking buffer: 3% nonfat dry milk in TBST.