

CACNB1 Rabbit pAb

Catalog No.: A3771

Basic Information

Observed MW

72kDa

Calculated MW

66kDa

Category

Primary antibody

Applications

WB

Cross-Reactivity

Human

Background

The protein encoded by this gene belongs to the calcium channel beta subunit family. It plays an important role in the calcium channel by modulating G protein inhibition, increasing peak calcium current, controlling the alpha-1 subunit membrane targeting and shifting the voltage dependence of activation and inactivation. Alternative splicing occurs at this locus and three transcript variants encoding three distinct isoforms have been identified.

Recommended Dilutions

WB 1:500 - 1:1000

Immunogen Information

Gene ID

782

Swiss Prot

Q02641

Immunogen

A synthetic peptide of human CACNB1

Synonyms

CAB1; CCHLB1; CACNLB1; CACNB1

Contact

 | www.abclonal.com

Product Information

Source

Rabbit

Isotype

IgG

Purification

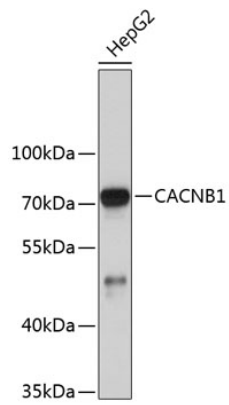
Affinity purification

Storage

Store at 4°C. Avoid freeze / thaw cycles.

Buffer: PBS with 0.02% sodium azide, pH7.3.

Validation Data



Western blot analysis of extracts of HepG2 cells, using CACNB1 antibody (A3771).
Secondary antibody: HRP Goat Anti-Rabbit IgG (H+L) (AS014) at 1:10000 dilution.
Lysates/proteins: 25µg per lane.
Blocking buffer: 3% nonfat dry milk in TBST.