

# BLVRB Rabbit pAb

Catalog No.: A3766

## Basic Information

---

### Observed MW

26kDa

### Calculated MW

22kDa

### Category

Primary antibody

### Applications

WB

### Cross-Reactivity

Human, Mouse

## Background

---

Enables biliverdin reductase (NAD(P)+) activity and riboflavin reductase (NADPH) activity. Involved in heme catabolic process. Located in cytosol; nucleoplasm; and plasma membrane.

## Recommended Dilutions

---

WB 1:500 - 1:1000

## Immunogen Information

---

### Gene ID

645

### Swiss Prot

P30043

### Immunogen

A synthetic peptide of human BLVRB

### Synonyms

FLR; BVRB; SDR43U1; HEL-S-10; BLVRB

## Contact

---

 | [www.abclonal.com](http://www.abclonal.com)

## Product Information

---

### Source

Rabbit

### Isotype

IgG

### Purification

Affinity purification

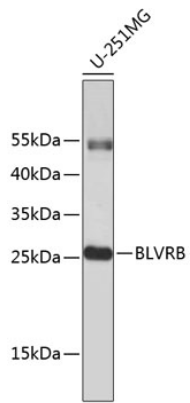
### Storage

Store at 4°C. Avoid freeze / thaw cycles.

Buffer: PBS with 0.02% sodium azide, pH7.3.

## Validation Data

---



Western blot analysis of extracts of U-251MG cells, using BLVRB antibody (A3766).  
Secondary antibody: HRP Goat Anti-Rabbit IgG (H+L) (AS014) at 1:10000 dilution.  
Lysates/proteins: 25µg per lane.  
Blocking buffer: 3% nonfat dry milk in TBST.