

BLVRA Rabbit pAb

Catalog No.: A3765 **1 Publications**

Basic Information

Observed MW

33kDa

Calculated MW

33kDa

Category

Primary antibody

Applications

ELISA, WB, IHC-P

Cross-Reactivity

Human, Mouse, Rat

Background

The protein encoded by this gene belongs to the biliverdin reductase family, members of which catalyze the conversion of biliverdin to bilirubin in the presence of NADPH or NADH. Mutations in this gene are associated with hyperbiliverdinemia. Alternatively spliced transcript variants have been found for this gene.

Recommended Dilutions

WB	1:500 - 1:2000
IHC-P	1:100 - 1:200

Immunogen Information

Gene ID	Swiss Prot
644	P53004

Immunogen

Recombinant fusion protein containing a sequence corresponding to amino acids 1-296 of human BLVRA (NP_001240752.1).

Synonyms

BVR; BLVR; BVRA; BLVRA

Contact

 | www.abclonal.com

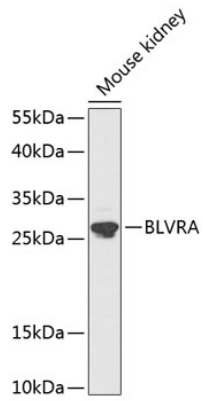
Product Information

Source	Isotype	Purification
Rabbit	IgG	Affinity purification

Storage

Store at -20°C. Avoid freeze / thaw cycles.
Buffer: PBS with 0.02% sodium azide, 50% glycerol, pH7.3.

Validation Data



Western blot analysis of extracts of mouse kidney, using BLVRA antibody (A3765) at 1:1000 dilution. Secondary antibody: HRP Goat Anti-Rabbit IgG (H+L) (AS014) at 1:10000 dilution. Lysates/proteins: 25 μ g per lane. Blocking buffer: 3% nonfat dry milk in TBST. Detection: ECL Enhanced Kit (RM00021). Exposure time: 90s.