

# ARL2 Rabbit pAb

Catalog No.: A3742

## Basic Information

### Observed MW

20kDa

### Calculated MW

21kDa

### Category

Primary antibody

### Applications

WB

### Cross-Reactivity

Human

## Background

This gene encodes a small GTP-binding protein of the RAS superfamily which functions as an ADP-ribosylation factor (ARF). The encoded protein is one of a functionally distinct group of ARF-like genes.

## Recommended Dilutions

WB 1:500 - 1:1000

## Immunogen Information

### Gene ID

402

### Swiss Prot

P36404

### Immunogen

A synthetic peptide of human ARL2

### Synonyms

ARFL2; MRCS1; ARL2

## Contact

 | [www.abclonal.com](http://www.abclonal.com)

## Product Information

### Source

Rabbit

### Isotype

IgG

### Purification

Affinity purification

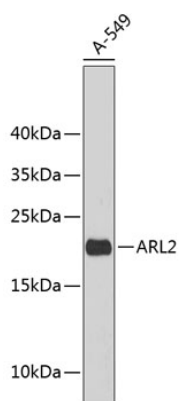
### Storage

Store at 4°C. Avoid freeze / thaw cycles.

Buffer: PBS with 0.02% sodium azide, pH 7.3.

## Validation Data

---



Western blot analysis of extracts of A-549 cells, using ARL2 antibody (A3742).  
Secondary antibody: HRP Goat Anti-Rabbit IgG (H+L) (A5014) at 1:10000 dilution.  
Lysates/proteins: 25µg per lane.  
Blocking buffer: 3% nonfat dry milk in TBST.