

A3722

Leader in Biomolecular Solutions for Life Science



Alpha-Fetoprotein (AFP) Rabbit pAb

Catalog No.: A3722

Basic Information

Observed MW

80kDa

Calculated MW

69kDa

Category

Polyclonal Antibody

Applications

WB, IP

Cross-Reactivity

Human, Mouse, Rat

Background

This gene encodes alpha-fetoprotein, a major plasma protein produced by the yolk sac and the liver during fetal life. Alpha-fetoprotein expression in adults is often associated with hepatocarcinoma and with teratoma, and has prognostic value for managing advanced gastric cancer. However, hereditary persistence of alpha-fetoprotein may also be found in individuals with no obvious pathology. The protein is thought to be the fetal counterpart of serum albumin, and the alpha-fetoprotein and albumin genes are present in tandem in the same transcriptional orientation on chromosome 4. Alpha-fetoprotein is found in monomeric as well as dimeric and trimeric forms, and binds copper, nickel, fatty acids and bilirubin. The level of alpha-fetoprotein in amniotic fluid is used to measure renal loss of protein to screen for spina bifida and anencephaly.

Recommended Dilutions

WB	1:200 - 1:2000
IP	1:20 - 1:50

Immunogen Information

Gene ID

174

Swiss Prot

P02771

Immunogen

Recombinant protein of human Alpha-Fetoprotein (Alpha-Fetoprotein (AFP))

Synonyms

AFPD; FETA; HPAFP; Alpha-Fetoprotein (AFP)

Contact



www.abclonal.com

Product Information

Source

Rabbit

Isotype

IgG

Purification

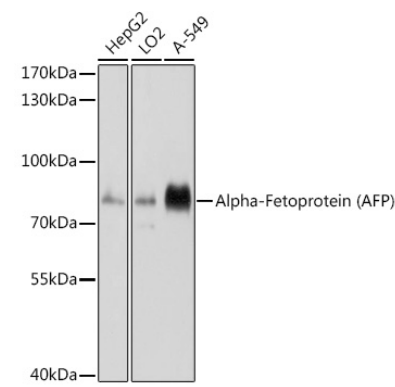
Affinity purification

Storage

Store at -20°C. Avoid freeze / thaw cycles.

Buffer: PBS with 0.02% sodium azide, 50% glycerol, pH 7.3.

Validation Data



Western blot analysis of various lysates using Alpha-Fetoprotein (AFP) Rabbit pAb (A3722) at 1:1000 dilution.
Secondary antibody: HRP Goat Anti-Rabbit IgG (H+L) (AS014) at 1:10000 dilution.
Lysates/proteins: 25µg per lane.
Blocking buffer: 3% nonfat dry milk in TBST.
Detection: ECL Basic Kit (RM00020).
Exposure time: 15s.