

CTAG1A Rabbit pAb

Catalog No.: A3709

Basic Information

Observed MW

20kDa

Calculated MW

18kDa

Category

Primary antibody

Applications

WB

Cross-Reactivity

Human

Background

The protein encoded by this gene is a tumor cell antigen found in various types of cancers, which makes it a good candidate for a cancer vaccine. This gene is also highly expressed in normal ovary and testis tissues. An identical copy of this gene is found on the same chromosome.

Recommended Dilutions

WB 1:500 - 1:1000

Immunogen Information

Gene ID

246100

Swiss Prot

P78358

Immunogen

A synthetic peptide of human CTAG1A

Synonyms

ESO1; CT6.1; LAGE-2; LAGE2A; NY-ESO-1; CTAG1A

Contact

 | www.abclonal.com

Product Information

Source

Rabbit

Isotype

IgG

Purification

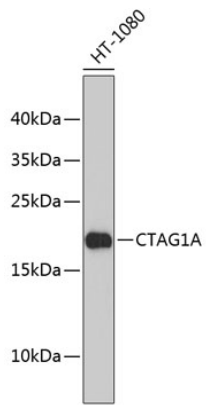
Affinity purification

Storage

Store at 4°C. Avoid freeze / thaw cycles.

Buffer: PBS with 0.02% sodium azide, pH7.3.

Validation Data



Western blot analysis of extracts of HT-1080 cells, using CTAG1A antibody (A3709).
Secondary antibody: HRP Goat Anti-Rabbit IgG (H+L) (AS014) at 1:10000 dilution.
Lysates/proteins: 25µg per lane.
Blocking buffer: 3% nonfat dry milk in TBST.