

SENP5 Rabbit pAb

Catalog No.: A3707

Basic Information

Observed MW

87kDa

Calculated MW

87kDa

Category

Primary antibody

Applications

WB

Cross-Reactivity

Human, Mouse

Background

The reversible posttranslational modification of proteins by the addition of small ubiquitin-like SUMO proteins (see SUMO1; MIM 601912) is required for numerous biologic processes. SUMO-specific proteases, such as SENP5, are responsible for the initial processing of SUMO precursors to generate a C-terminal diglycine motif required for the conjugation reaction. They also have isopeptidase activity for the removal of SUMO from high molecular mass SUMO conjugates (Di Bacco et al., 2006 [PubMed 16738315]).

Recommended Dilutions

WB 1:500 - 1:2000

Immunogen Information

Gene ID

205564

Swiss Prot

Q96HI0

Immunogen

A synthetic Peptide of human SENP5

Synonyms

SENP5

Contact

 | www.abclonal.com

Product Information

Source

Rabbit

Isotype

IgG

Purification

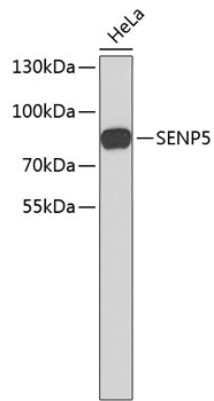
Affinity purification

Storage

Store at -20°C. Avoid freeze / thaw cycles.

Buffer: PBS with 0.02% sodium azide, 50% glycerol, pH7.3.

Validation Data



Western blot analysis of extracts of HeLa cells, using SENP5 antibody (A3707).
Secondary antibody: HRP Goat Anti-Rabbit IgG (H+L) (AS014) at 1:10000 dilution.
Lysates/proteins: 25 μ g per lane.
Blocking buffer: 3% nonfat dry milk in TBST.