

CTR9 Rabbit pAb

Catalog No.: A3659

Basic Information

Observed MW

145kDa

Calculated MW

134kDa

Category

Primary antibody

Applications

ELISA, WB

Cross-Reactivity

Human

Background

The protein encoded by this gene is a component of the PAF1 complex, which associates with RNA polymerase II and functions in transcriptional regulation and elongation. This complex also plays a role in the modification of histones.

Recommended Dilutions

WB 1:1000 - 1:2000

Immunogen Information

Gene ID

9646

Swiss Prot

Q6PD62

Immunogen

Recombinant fusion protein containing a sequence corresponding to amino acids 1024-1173 of human CTR9 (NP_055448.1).

Synonyms

TSBP; p150; SH2BP1; p150TSP; CTR9

Contact

 | www.abclonal.com

Product Information

Source

Rabbit

Isotype

IgG

Purification

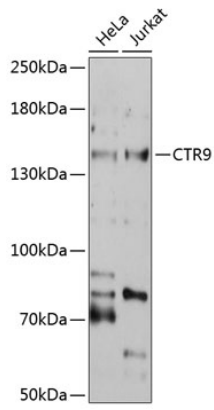
Affinity purification

Storage

Store at -20°C. Avoid freeze / thaw cycles.

Buffer: PBS with 0.01% thimerosal, 50% glycerol, pH7.3.

Validation Data



Western blot analysis of extracts of various cell lines, using CTR9 antibody (A3659) at 1:1000 dilution.
Secondary antibody: HRP Goat Anti-Rabbit IgG (H+L) (AS014) at 1:10000 dilution.
Lysates/proteins: 25 μ g per lane.
Blocking buffer: 3% nonfat dry milk in TBST.
Detection: ECL Basic Kit (RM00020).
Exposure time: 30s.