

# NCR2 Rabbit pAb

Catalog No.: A3657

## Basic Information

---

### Observed MW

44kDa

### Calculated MW

31kDa

### Category

Primary antibody

### Applications

ELISA, WB

### Cross-Reactivity

Human

## Background

---

Predicted to enable signaling receptor activity. Predicted to be involved in cellular defense response and signal transduction. Predicted to be located in plasma membrane. Predicted to be integral component of plasma membrane. Predicted to be active in cell surface.

## Recommended Dilutions

---

WB 1:200 - 1:2000

## Immunogen Information

---

### Gene ID

9436

### Swiss Prot

O95944

### Immunogen

Recombinant fusion protein containing a sequence corresponding to amino acids 22-192 of human NCR2 (NP\_004819.2).

### Synonyms

LY95; CD336; NKP44; NK-p44; dj149M18.1; NCR2

## Contact

---

 | [www.abclonal.com](http://www.abclonal.com)

## Product Information

---

### Source

Rabbit

### Isotype

IgG

### Purification

Affinity purification

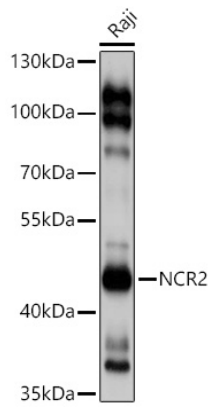
### Storage

Store at -20°C. Avoid freeze / thaw cycles.

Buffer: PBS with 0.02% sodium azide, 50% glycerol, pH7.3.

## Validation Data

---



Western blot analysis of extracts of Raji cells, using NCR2 antibody (A3657) at 1:1000 dilution.  
Secondary antibody: HRP Goat Anti-Rabbit IgG (H+L) (AS014) at 1:10000 dilution.  
Lysates/proteins: 25µg per lane.  
Blocking buffer: 3% nonfat dry milk in TBST.  
Detection: ECL Basic Kit (RM00020).  
Exposure time: 10s.