

A3654

Leader in Biomolecular Solutions for Life Science



AGTR2 Rabbit mAb

Catalog No.: A3654 **Recombinant** **1 Publications**

Basic Information

Observed MW

45kDa

Calculated MW

41kDa

Category

SMab Recombinant Monoclonal Antibody

Applications

WB,ELISA

Cross-Reactivity

Human,Mouse,Rat

CloneNo number

ARC2064

Background

The protein encoded by this gene belongs to the G-protein coupled receptor 1 family, and functions as a receptor for angiotensin II. It is an intergral membrane protein that is highly expressed in fetus and in neonates, but scantily in adult tissues, except brain, adrenal medulla, and atretic ovary. This receptor has been shown to mediate programmed cell death and this apoptotic function may play an important role in developmental biology and pathophysiology. Mutations in this gene are been associated with X-linked cognitive disability. Severe Acute Respiratory Syndrome Coronavirus (SARS-CoV) and SARS-CoV-2 infection results in down-regulation of angiotensin converting enzyme-2 (ACE2) receptors, the effects of which, triggers serious inflammatory lesions in the tissues involved, primarily in the lungs. The inflammatory reaction appears to be mediated by angiotensin II derivatives, including the angiotensin AT2 receptor which has been found to be upregulated in bronchoalveolar lavage samples from Coronavirus disease 2019 (COVID19) patients.

Recommended Dilutions

WB 1:500 - 1:2000

Immunogen Information

Gene ID

186

Swiss Prot

P50052

Immunogen

A synthetic peptide corresponding to a sequence within amino acids 264-363 of human AGTR2 (P50052).

Synonyms

AT2; ATGR2; MRX88; AGTR2

Contact



www.abclonal.com

Product Information

Source

Rabbit

Isotype

IgG

Purification

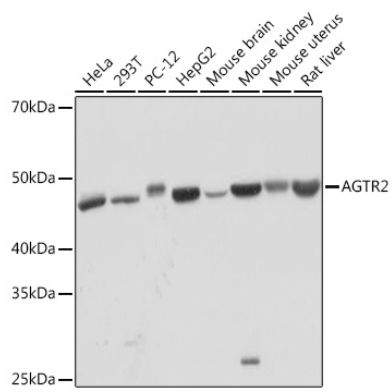
Affinity purification

Storage

Store at -20°C. Avoid freeze / thaw cycles.

Buffer: PBS with 0.02% sodium azide,0.05% BSA,50% glycerol,pH7.3.

Validation Data



Western blot analysis of extracts of various cell lines, using AGTR2 Rabbit mAb (A3654) at 1:1000 dilution.
Secondary antibody: HRP Goat Anti-Rabbit IgG (H+L) (AS014) at 1:10000 dilution.
Lysates/proteins: 25µg per lane.
Blocking buffer: 3% nonfat dry milk in TBST.
Detection: ECL Basic Kit (RM00020).
Exposure time: 1min.