

# CLEC11A Rabbit pAb

Catalog No.: A3634

## Basic Information

### Observed MW

46kDa

### Calculated MW

36kDa

### Category

Primary antibody

### Applications

ELISA, WB

### Cross-Reactivity

Human, Mouse

## Background

This gene encodes a member of the C-type lectin superfamily. The encoded protein is a secreted sulfated glycoprotein and functions as a growth factor for primitive hematopoietic progenitor cells. An alternative splice variant has been described but its biological nature has not been determined.

## Recommended Dilutions

WB 1:200 - 1:2000

## Immunogen Information

### Gene ID

6320

### Swiss Prot

Q9Y240

### Immunogen

Recombinant fusion protein containing a sequence corresponding to amino acids 22-323 of human CLEC11A (NP\_002966.1).

### Synonyms

P47; SCGF; LSLCL; CLECSF3; CLEC11A

## Contact

 | [www.abclonal.com](http://www.abclonal.com)

## Product Information

### Source

Rabbit

### Isotype

IgG

### Purification

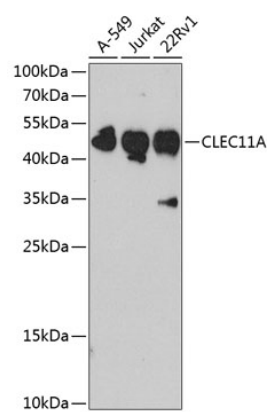
Affinity purification

### Storage

Store at -20°C. Avoid freeze / thaw cycles.

Buffer: PBS with 0.02% sodium azide, 50% glycerol, pH 7.3.

# Validation Data



Western blot analysis of extracts of various cell lines, using CLEC11A antibody (A3634) at 1:1000 dilution.  
Secondary antibody: HRP Goat Anti-Rabbit IgG (H+L) (A5014) at 1:10000 dilution.  
Lysates/proteins: 25µg per lane.  
Blocking buffer: 3% nonfat dry milk in TBST.  
Detection: ECL Basic Kit (RM00020).  
Exposure time: 90s.