

A3614

Leader in Biomolecular Solutions for Life Science



## c-Maf Rabbit pAb

Catalog No.: A3614

### Basic Information

---

**Observed MW**

50kDa

**Calculated MW**

38kDa

**Category**

Polyclonal Antibody

**Applications**

WB,ELISA

**Cross-Reactivity**

Human

### Background

---

The protein encoded by this gene is a DNA-binding, leucine zipper-containing transcription factor that acts as a homodimer or as a heterodimer. Depending on the binding site and binding partner, the encoded protein can be a transcriptional activator or repressor. This protein plays a role in the regulation of several cellular processes, including embryonic lens fiber cell development, increased T-cell susceptibility to apoptosis, and chondrocyte terminal differentiation. Defects in this gene are a cause of juvenile-onset pulverulent cataract as well as congenital cerulean cataract 4 (CCA4). Two transcript variants encoding different isoforms have been found for this gene.

### Recommended Dilutions

---

WB 1:1000 - 1:3000

### Immunogen Information

---

**Gene ID**

4094

**Swiss Prot**

O75444

**Immunogen**

Recombinant fusion protein containing a sequence corresponding to amino acids 314-403 of human c-Maf (NP\_005351.2).

**Synonyms**

CCA4; AYGRP; c-MAF; CTRCT21; c-Maf

### Contact

---



[www.abclonal.com](http://www.abclonal.com)

### Product Information

---

**Source**

Rabbit

**Isotype**

IgG

**Purification**

Affinity purification

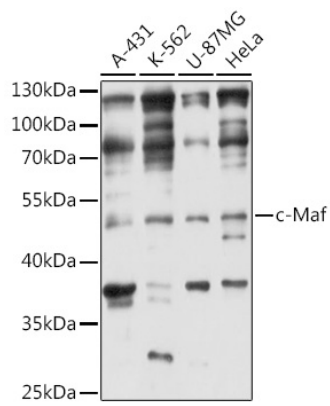
**Storage**

Store at -20°C. Avoid freeze / thaw cycles.

Buffer: PBS with 0.01% thimerosal,50% glycerol,pH7.3.

## Validation Data

---



Western blot analysis of various lysates using c-Maf Rabbit pAb (A3614) at 1:3000 dilution.  
Secondary antibody: HRP Goat Anti-Rabbit IgG (H+L) (AS014) at 1:10000 dilution.  
Lysates/proteins: 25 $\mu$ g per lane.  
Blocking buffer: 3% nonfat dry milk in TBST.  
Detection: ECL Basic Kit (RM00020).  
Exposure time: 5s.