

# MXD1 Rabbit pAb

Catalog No.: A3613

## Basic Information

### Observed MW

22kDa

### Calculated MW

25kDa

### Category

Primary antibody

### Applications

ELISA, WB

### Cross-Reactivity

Human, Rat

## Background

This gene encodes a member of the MYC/MAX/MAD network of basic helix-loop-helix leucine zipper transcription factors. The MYC/MAX/MAD transcription factors mediate cellular proliferation, differentiation and apoptosis. The encoded protein antagonizes MYC-mediated transcriptional activation of target genes by competing for the binding partner MAX and recruiting repressor complexes containing histone deacetylases. Mutations in this gene may play a role in acute leukemia, and the encoded protein is a potential tumor suppressor. Alternatively spliced transcript variants encoding multiple isoforms have been observed for this gene.

## Recommended Dilutions

WB 1:500 - 1:1000

## Immunogen Information

### Gene ID

4084

### Swiss Prot

Q05195

### Immunogen

A synthetic peptide corresponding to a sequence within amino acids 100-200 of human MXD1 (NP\_002348.1).

### Synonyms

MAD; MAD1; BHLHC58; MXD1

## Contact

 | [www.abclonal.com](http://www.abclonal.com)

## Product Information

### Source

Rabbit

### Isotype

IgG

### Purification

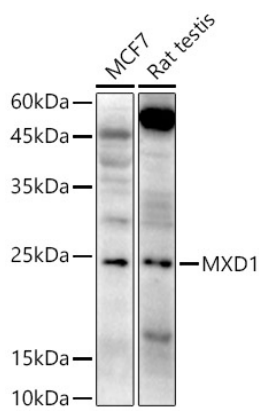
Affinity purification

### Storage

Store at -20°C. Avoid freeze / thaw cycles.

Buffer: PBS with 0.05% proclin300, 50% glycerol, pH7.3.

# Validation Data



Western blot analysis of extracts of various cell lines, using MXD1 antibody (A3613) at 1:800 dilution.  
Secondary antibody: HRP Goat Anti-Rabbit IgG (H+L) (A5014) at 1:10000 dilution.  
Lysates/proteins: 25µg per lane.  
Blocking buffer: 3% nonfat dry milk in TBST.  
Detection: ECL Basic Kit (RM00020).  
Exposure time: 90s.