

A3611

Leader in Biomolecular Solutions for Life Science



## Integrin alpha 6 (ITGA6/CD49f) Mouse mAb

Catalog No.: A3611 **1 Publications**

### Basic Information

#### Observed MW

130kDa

#### Calculated MW

127kDa

#### Category

SMab Recombinant Monoclonal Antibody

#### Applications

WB,IHC-P,IF/ICC,FC,ELISA

#### Cross-Reactivity

Human

### Background

The gene encodes a member of the integrin alpha chain family of proteins. Integrins are heterodimeric integral membrane proteins composed of an alpha chain and a beta chain that function in cell surface adhesion and signaling. The encoded preproprotein is proteolytically processed to generate light and heavy chains that comprise the alpha 6 subunit. This subunit may associate with a beta 1 or beta 4 subunit to form an integrin that interacts with extracellular matrix proteins including members of the laminin family. The alpha 6 beta 4 integrin may promote tumorigenesis, while the alpha 6 beta 1 integrin may negatively regulate erbB2/HER2 signaling. Alternative splicing results in multiple transcript variants.

### Recommended Dilutions

WB	1:500 - 1:1000
IHC-P	1:50 - 1:100
IF/ICC	1:20 - 1:50
FC	1:20 - 1:50

### Immunogen Information

#### Gene ID

3655

#### Swiss Prot

P23229

#### Immunogen

A synthetic peptide of human Integrin alpha 6 (ITGA6/CD49f)

#### Synonyms

JEB6; CD49f; VLA-6; ITGA6A; ITGA6B; Integrin alpha 6 (ITGA6/CD49f)

### Contact



[www.abclonal.com](http://www.abclonal.com)

### Product Information

#### Source

Mouse

#### Isotype

IgG

#### Purification

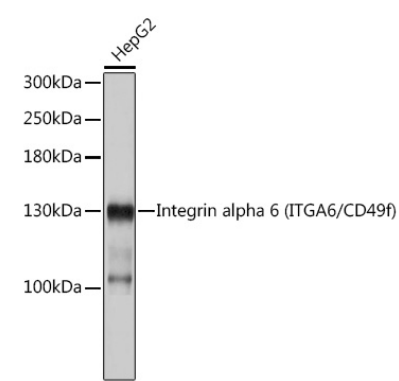
Affinity purification

#### Storage

Store at 4°C. Avoid freeze / thaw cycles.

Buffer: PBS with 0.02% sodium azide,pH7.3.

Validation Data



Western blot analysis of lysates from HepG2 cells, using Integrin alpha 6 (ITGA6/CD49f) Mouse mAb (A3611).  
Secondary antibody: HRP Goat Anti-Mouse IgG (H+L) (AS003) at 1:10000 dilution.  
Lysates/proteins: 25µg per lane.  
Blocking buffer: 3% nonfat dry milk in TBST.