

# DOCK2 Rabbit pAb

Catalog No.: A3595 **1 Publications**

## Basic Information

### Observed MW

240kDa

### Calculated MW

212kDa

### Category

Primary antibody

### Applications

ELISA, WB, IF/ICC, IP

### Cross-Reactivity

Human, Mouse

## Background

The protein encoded by this gene belongs to the CDM protein family. It is specifically expressed in hematopoietic cells and is predominantly expressed in peripheral blood leukocytes. The protein is involved in remodeling of the actin cytoskeleton required for lymphocyte migration in response to chemokine signaling. It activates members of the Rho family of GTPases, for example RAC1 and RAC2, by acting as a guanine nucleotide exchange factor (GEF) to exchange bound GDP for free GTP. Mutations in this gene result in immunodeficiency 40 (IMD40), a combined form of immunodeficiency that affects T cell number and function, also with variable defects in B cell and NK cell function.

## Recommended Dilutions

**WB** 1:500 - 1:1000**IF/ICC** 1:50 - 1:200**IP** 0.5µg-4µg antibody for  
200µg-400µg extracts of  
whole cells

## Immunogen Information

### Gene ID

1794

### Swiss Prot

Q92608

### Immunogen

Recombinant fusion protein containing a sequence corresponding to amino acids 1551-1830 of human DOCK2 (NP\_004937.1).

### Synonyms

IMD40; DOCK2

## Contact

 | [www.abclonal.com](http://www.abclonal.com)

## Product Information

### Source

Rabbit

### Isotype

IgG

### Purification

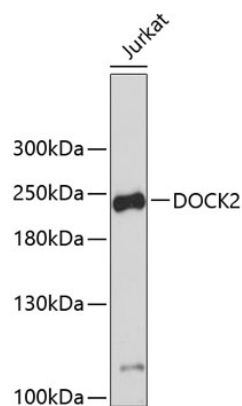
Affinity purification

### Storage

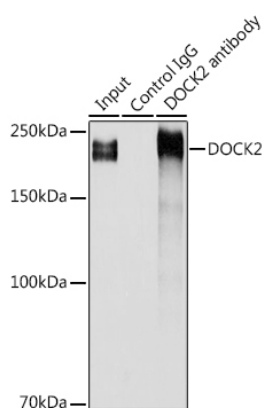
Store at -20°C. Avoid freeze / thaw cycles.

Buffer: PBS with 0.01% thimerosal, 50% glycerol, pH7.3.

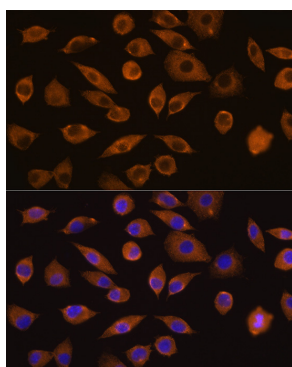
## Validation Data



Western blot analysis of lysates from Jurkat cells, using DOCK2 Rabbit pAb (A3595).  
Secondary antibody: HRP Goat Anti-Rabbit IgG (H+L) (A5014) at 1:10000 dilution.  
Lysates/proteins: 25µg per lane.  
Blocking buffer: 3% nonfat dry milk in TBST.



Immunoprecipitation analysis of 300 µg extracts of Jurkat cells using 3 µg DOCK2 antibody (A3595).  
Western blot was performed from the immunoprecipitate using DOCK2 antibody (A3595) at a dilution of 1:500.



Immunofluorescence analysis of L929 cells using DOCK2 Rabbit pAb (A3595) at dilution of 1:100 (40x lens). Secondary antibody: Cy3 Goat Anti-Rabbit IgG (H+L) (A5007) at 1:500 dilution. Blue: DAPI for nuclear staining.