

A3568

Leader in Biomolecular Solutions for Life Science



CoREST/RCOR1 Rabbit mAb

Catalog No.: A3568 **Recombinant** **1 Publications**

Basic Information

Observed MW

65kDa

Calculated MW

53kDa

Category

SMab Recombinant Monoclonal Antibody

Applications

WB,IHC-P,IP,ChIP,ELISA

Cross-Reactivity

Human,Mouse,Rat

CloneNo number

ARC2044

Background

This gene encodes a protein that is well-conserved, downregulated at birth, and with a specific role in determining neural cell differentiation. The encoded protein binds to the C-terminal domain of REST (repressor element-1 silencing transcription factor).

Recommended Dilutions

WB 1:500 - 1:2000

IHC-P 1:50 - 1:200

IP 0.5µg-4µg antibody for
200µg-400µg extracts of
whole cells

ChIP 5µg antibody for
10µg-15µg of Chromatin

Immunogen Information

Gene ID

23186

Swiss Prot

Q9UKL0

Immunogen

A synthetic peptide corresponding to a sequence within amino acids 1-100 of human CoREST/RCOR1 (Q9UKL0).

Synonyms

RCOR; COREST; CoREST/RCOR1

Contact



www.abclonal.com

Product Information

Source

Rabbit

Isotype

IgG

Purification

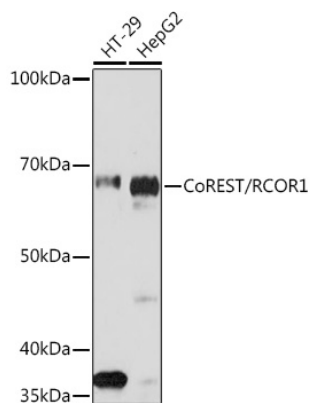
Affinity purification

Storage

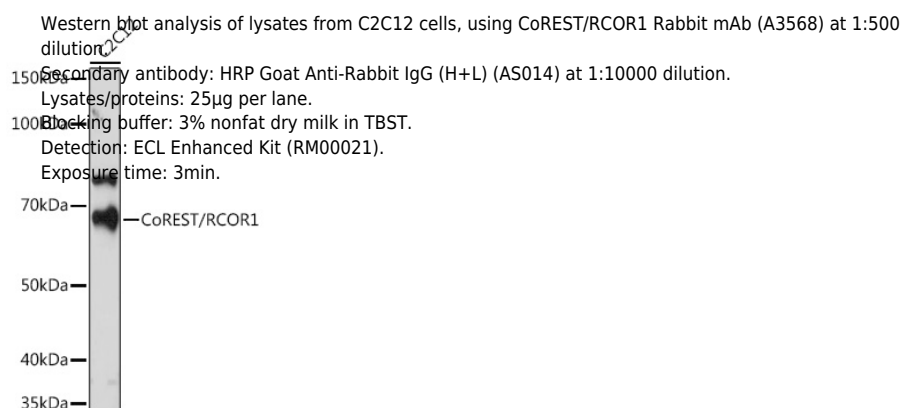
Store at -20°C. Avoid freeze / thaw cycles.

Buffer: PBS with 0.02% sodium azide,0.05% BSA,50% glycerol,pH7.3.

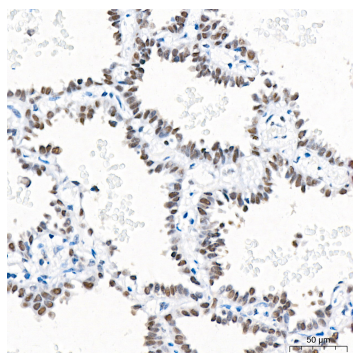
Validation Data



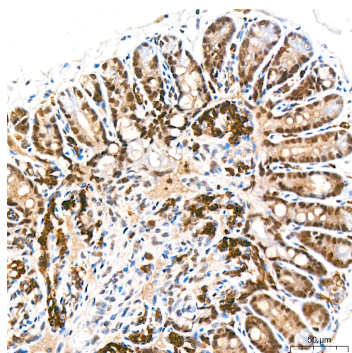
Western blot analysis of various lysates using CoREST/RCOR1 Rabbit mAb (A3568) at 1:1000 dilution.
 Secondary antibody: HRP Goat Anti-Rabbit IgG (H+L) (AS014) at 1:10000 dilution.
 Lysates/proteins: 25µg per lane.
 Blocking buffer: 3% nonfat dry milk in TBST.
 Detection: ECL Basic Kit (RM00020).
 Exposure time: 3min.



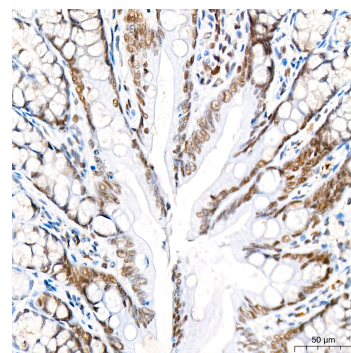
Western blot analysis of lysates from C2C12 cells, using CoREST/RCOR1 Rabbit mAb (A3568) at 1:500 dilution.
 Secondary antibody: HRP Goat Anti-Rabbit IgG (H+L) (AS014) at 1:10000 dilution.
 Lysates/proteins: 25µg per lane.
 Blocking buffer: 3% nonfat dry milk in TBST.
 Detection: ECL Enhanced Kit (RM00021).
 Exposure time: 3min.



Immunohistochemistry analysis of CoREST/RCOR1 in paraffin-embedded Human lung adenocarcinoma tissue using CoREST/RCOR1 Rabbit mAb (A3568) at a dilution of 1:200 (40x lens). High pressure antigen retrieval was performed with 0.01 M Tris-EDTA buffer (pH 9.0) prior to IHC staining.



Immunohistochemistry analysis of CoREST/RCOR1 in paraffin-embedded mouse colon tissue using CoREST/RCOR1 Rabbit mAb (A3568) at a dilution of 1:200 (40x lens). High pressure antigen retrieval was performed with 0.01 M Tris-EDTA buffer (pH 9.0) prior to IHC staining.



Immunohistochemistry analysis of CoREST/RCOR1 in paraffin-embedded rat colon tissue using CoREST/RCOR1 Rabbit mAb (A3568) at a dilution of 1:200 (40x lens). High pressure antigen retrieval was performed with 0.01 M Tris-EDTA buffer (pH 9.0) prior to IHC staining.

Validation Data

Immunoprecipitation analysis of 300 µg extracts of THP-1 cells using 3 µg CoREST/RCOR1 antibody (A3568). Western blot was performed from the immunoprecipitate using CoREST/RCOR1 antibody (A3568) at a dilution of 1:1000.

